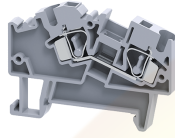


AS4



**connectwell**  
THE RIGHT CONNECTION

4 sq.mm Angular Feed Through Spring Terminal Blocks.

These Terminal Blocks are an ideal choice for compact junction boxes having limitations of space and height. These terminals are also used for under floor wiring systems. A major advantage of Angular Terminal Block over the top wire entry Terminal Blocks is that their profile remains the same across the entire range of Feed Through, Multiple Connection, Ground and Ground Multiple Connection Terminal Blocks. The other advantages include: Angular entry of wires saves conductor length, marking / identification facility on the center (top) of the block, Multiplication of connections through bridging.

**TECHNICAL DATA**

Rated Voltage	800 V
Rated Current	32 A
Housing Material	Polymide
Product Function	Feed Through
Wire Entry Orientation	Angular Entry
Mounting Possibility	DIN 35/DIN 35-15 Rail
Operated by	Screwdriver
Rated Surge Voltage	8 KV
Pollution Degree	3

**CONNECTION DATA**

Conductor Cross Section Stranded min.	0.2 mm <sup>2</sup>
Conductor Cross Section Stranded max.	4 mm <sup>2</sup>
Conductor Cross Section AWG/Kcmil min	22 AWG
Conductor Cross Section AWG/Kcmil max	10 AWG
Conductor Cross Section Stranded with Ferrule/Lug min	0.2 mm <sup>2</sup>
Conductor Cross Section Stranded with Ferrule/Lug max	4 mm <sup>2</sup>
2 Conductors with same Cross Section Stranded min	0.2 mm <sup>2</sup>
2 Conductor with same Cross Section Stranded max	4 mm <sup>2</sup>
Conductor Cross Section Solid min	0.2 mm <sup>2</sup>
Conductor Cross Section Solid max	6 mm <sup>2</sup>
2 Conductors with same Cross Section Stranded with TWIN Ferrule/Lug min	0.2 mm <sup>2</sup>
2 Conductor with same Cross Section Stranded with TWIN Ferrule/Lug max	2.5 mm <sup>2</sup>
Stripping Length	15 mm

**DIMENSIONS**

Height with DIN 35 x 15 mm rail	51 mm
Height with DIN 35 x 7.5 mm rail	44 mm
Length	61.5 mm
Width (Thickness)	6 mm

**ORDERING INFORMATION**

CAT. NO.	DESCRIPTION	STD. PACK
AS4	4.0 sq.mm Angular Spring Clamp Feed Through Terminal Block In Grey Colour	100

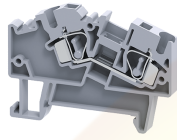
**ORDERING INFORMATION**

CAT. NO.	DESCRIPTION	STD. PACK
AS4R	4.0 sq.mm Angular Spring Clamp Feed Through Terminal Block In Red Colour	100
AS4Y	4.0 sq.mm Angular Spring Clamp Feed Through Terminal Block In Yellow Colour	100
AS4BU	4.0 sq.mm Angular Spring Clamp Feed Through Terminal Block In Blue Colour	100
AS4GN	4.0 sq.mm Angular Spring Clamp Feed Through Terminal Block In Green Colour	100
AS4BK	4.0 sq.mm Angular Spring Clamp Feed Through Terminal Block In Black Colour	100

**ACCESSORIES**

IMAGES	CAT. NO.	DESCRIPTION	STD. PACK
	CA701-1M	Din 35 Rail unslotted 1 meter	50
	CA701-2M	Din 35 Rail unslotted 2 meter	50
	CA701-2M-S	Din 35 Rail slotted 2 meter	50
	CA701-1M-S	Din 35 Rail slotted 1 meter	50
	CA701-15-1M	Din 35 Rail 15 deep unslotted 1 meter	50
	CA701-15-1M-S	Din 35 Rail 15 deep slotted 1 meter	50
	CA701-15-2M	Din 35 Rail 15 deep unslotted 2 meter	50
	CA701-15-2M-S	Din 35 Rail 15 deep slotted 2 meter	50
	CA103	End Clamp in Polyamide suitable for Din 35/Din 35-15 rails	50
	CA702	End Clamp in Polyamide 66 suitable for Din 32 / Din 35 / Din 35-15 Rails	50
	CA802	End Clamp in Polyamide suitable for Din 35 / Din 35-15 Rails	50
	EPAS4	End Plate in Grey colour	50
	EPAS4BU	End Plate in Blue colour	50
	CA801/2	Insulated Push-in Type Shorting Link 2 Pole	100
	CA801/2-3	Alternate shorting Link	100

AS4



**connectwell**  
THE RIGHT CONNECTION

**ACCESSORIES**

IMAGES	CAT. NO.	DESCRIPTION	STD. PACK
	CA901/2	Insulated Push in Type wire Shorting Link	100
	CA901/6	Step Down Shorting Link	100
	CA901/4	Step Down Shorting Link	100
	CA509/K6	Blank Marking Tag	100
	SCS0.6/3.5	Electricians Screwdriver for slotted screws	10

**APPROVALS**



**RATINGS AS PER STANDARDS**

STANDARDS	UL 1059	CSA C.22.2 No:158	IEC/EN60947-7-1
Approvals	UL	CSA	CE
Conductor Cross Section Stranded min.	22 AWG	22 AWG	0.34 mm <sup>2</sup>
Conductor Cross Section Stranded max.	10 AWG	10 AWG	4 mm <sup>2</sup>
Rated Voltage	600 V	600 V	800 V
Rated Current	35 A	35 A	32 A
STANDARDS	EN60079-7	EN60079-7	
Approvals	ATEX	ATEX-IECex	
Conductor Cross Section Stranded min.	0.34 mm <sup>2</sup>	0.34 mm <sup>2</sup>	
Conductor Cross Section Stranded max.	4 mm <sup>2</sup>	4 mm <sup>2</sup>	
Rated Voltage	630 V	630 V	
Rated Current	28 A	28 A	
Operating Temperature Range	-40 to +75 °C		

Website : [rujutaent.com](http://rujutaent.com)  
 Email : [rujutaent@gmail.com](mailto:rujutaent@gmail.com)  
 9082463426 , 8169580098  
 9820825440 , 9769789105