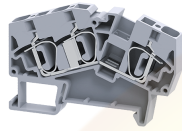


AS6/3


connectwell
 THE RIGHT CONNECTION

6 sq.mm Angular Multiple Connection Spring Terminal Blocks with 3 connection points.

These Terminal Blocks are an ideal choice for compact junction boxes having limitations of space and height. These terminals are also used for under floor wiring systems. A major advantage of Angular Terminal Blocks over the top wire entry Terminal Blocks is that their profile remains the same across the entire range of Feed Through, Multiple Connection, Ground and Ground Multiple Connection Terminal Blocks. The other advantages include: Angular entry of wires saves conductor length, marking / identification facility on the center (top) of the block, Multiplication of connections through bridging.

TECHNICAL DATA

Rated Voltage	800 V
Rated Current	41 A
Housing Material	Polymide
Product Function	Multiple Connection
Wire Entry Orientation	Angular Entry
Mounting Possibility	DIN 35/DIN 35-15 Rail
Operated by	Screwdriver
Rated Surge Voltage	8 KV
Pollution Degree	3

CONNECTION DATA

Conductor Cross Section Stranded min.	0.2 mm ²
Conductor Cross Section Stranded max.	6 mm ²
Conductor Cross Section AWG/Kcmil min	22 AWG
Conductor Cross Section AWG/Kcmil max	8 AWG
Conductor Cross Section Stranded with Ferrule/Lug min	0.2 mm ²
Conductor Cross Section Stranded with Ferrule/Lug max	6 mm ²
2 Conductors with same Cross Section Stranded min	0.2 mm ²
2 Conductor with same Cross Section Stranded max	4 mm ²
Conductor Cross Section Solid min	0.2 mm ²
Conductor Cross Section Solid max	10 mm ²
2 Conductors with same Cross Section Stranded with TWIN Ferrule/Lug min	0.2 mm ²
2 Conductor with same Cross Section Stranded with TWIN Ferrule/Lug max	4 mm ²
Stripping Length	15 mm

DIMENSIONS

Height with DIN 35 x 15 mm rail	57 mm
Height with DIN 35 x 7.5 mm rail	49.3 mm
Length	74 mm
Width (Thickness)	8 mm

ORDERING INFORMATION

CAT. NO.	DESCRIPTION	STD. PACK
AS6/3	6.0 sq.mm Angular Multiple Connection Spring Terminal Blocks In Grey Colour	50

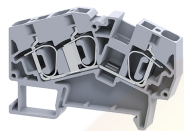
ORDERING INFORMATION

CAT. NO.	DESCRIPTION	STD. PACK
AS6/3R	6.0 sq.mm Angular Multiple Connection Spring Terminal Blocks In Red Colour	50
AS6/3Y	6.0 sq.mm Angular Multiple Connection Spring Terminal Blocks In Yellow Colour	50
AS6/3BU	6.0 sq.mm Angular Multiple Connection Spring Terminal Blocks In Blue Colour	50
AS6/3GN	6.0 sq.mm Angular Multiple Connection Spring Terminal Blocks In Green Colour	50
AS6/3BK	6.0 sq.mm Angular Multiple Connection Spring Terminal Blocks In Black Colour	50

ACCESSORIES

IMAGES	CAT. NO.	DESCRIPTION	STD. PACK
	CA701-1M	Din 35 Rail unslotted 1 meter	50
	CA701-2M	Din 35 Rail unslotted 2 meter	50
	CA701-2M-S	Din 35 Rail slotted 2 meter	50
	CA701-1M-S	Din 35 Rail slotted 1 meter	50
	CA701-15-1M	Din 35 Rail 15 deep unslotted 1 meter	50
	CA701-15-1M-S	Din 35 Rail 15 deep slotted 1 meter	50
	CA701-15-2M	Din 35 Rail 15 deep unslotted 2 meter	50
	CA701-15-2M-S	Din 35 Rail 15 deep slotted 2 meter	50
	CA103	End Clamp in Polyamide suitable for Din 35/Din 35-15 rails	50
	CA702	End Clamp in Polyamide 66 suitable for Din 32 / Din 35 / Din 35-15 Rails	50
	CA802	End Clamp in Polyamide suitable for Din 35 / Din 35-15 Rails	50
	EPAS6	End Plate in Grey colour	50
	CA801/3	Insulated Push-In Type shorting link	100
	CA801/3-3	Alternate Shorting Link	100

AS6/3


connectwell
 THE RIGHT CONNECTION

ACCESSORIES

IMAGES	CAT. NO.	DESCRIPTION	STD. PACK
	CA901/3	Insulated Push in Type wire Shorting Link	100
	CA901/5	Step Down Shorting Link	100
	CA901/4	Step Down Shorting Link	100
	CA801/8	Step Down Shorting Link	100
	CA509/K8	Marking Tag with Vertical printing.	100
	SCS0.8/4	Electricians Screwdriver for slotted screws	10

APPROVALS



AEx ell Ex ell



RATINGS AS PER STANDARDS

STANDARDS	UL 1059	CSA C.22.2 No:158	IEC/EN60947-7-1
Approvals	UL	CSA	CE
Conductor Cross Section Stranded min.	22 AWG	22 AWG	0.2 mm ²
Conductor Cross Section Stranded max.	8 AWG	8 AWG	6 mm ²
Rated Voltage	600 V	600 V	800 V
Rated Current	50 A	50 A	41 A
STANDARDS	EN60079-7	EN60079-7	
Approvals	ATEX	ATEX-IECex	
Conductor Cross Section Stranded min.	0.34 mm ²	0.34 mm ²	
Conductor Cross Section Stranded max.	6 mm ²	6 mm ²	
Rated Voltage	630 V	630 V	
Rated Current	36 A	36 A	
Operating Temperature Range	-40 to +75 °C		