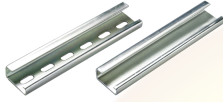


CA501



connectwell
THE RIGHT CONNECTION

Din 32 Rail

Din Rail for mounting Terminal Blocks and Interface modules. Most of Connectwell's Terminal Blocks and Interface Modules are designed to be mounted on Din Rails (Channels) that can be fixed easily on panel boards and other equipment. These rails comply with European standards EN 50 035. The rails are zinc plated and chromate passivated. Accordingly to the DIN VDE 0611 part 3, steel mounting rails are permissible as grounding bus bars (PE function) but do not have the PEN function.

PRODUCT SPECIFICATION

Height	15 mm
Width (Thickness)	1.5 mm

ORDERING INFORMATION

CAT. NO.	DESCRIPTION	STD. PACK
CA501-1M	Din 32 Rail unslotted 1 meter	50
CA501-1M-S	Din 32 Rail slotted 1 meter	50
CA501-2M	Din 32 Rail unslotted 2 meter	50
CA501-2M-S	Din 32 Rail slotted 2 meter	50

Website : rujutaent.com
Email : rujutaent@gmail.com
9082463426 , 8169580098
9820825440 , 9769789105

1 of 1