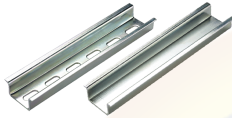


CA701-15



connectwell
THE RIGHT CONNECTION

Din 35 Rail

Din Rail for mounting Terminal

Blocks and Interface modules. Most of Connectwell's Terminal Blocks and Interface Modules are designed to be mounted on Din Rails (Channels) that can be fixed easily on panel boards and other equipment. These rails comply with European standards EN 50 022. The rails are zinc plated and chromate passivated. Accordingly to the DIN VDE 0611 part 3, steel mounting rails are permissible as grounding bus bars (PE function) but do not have the PEN function

PRODUCT SPECIFICATION

Height	15 mm
Width (Thickness)	1.5 mm

ORDERING INFORMATION

CAT. NO.	DESCRIPTION	STD. PACK
CA701-15-1M	Din 35 Rail 15 deep unslotted 1 meter	50
CA701-15-1M-S	Din 35 Rail 15 deep slotted 1 meter	50
CA701-15-2M	Din 35 Rail 15 deep unslotted 2 meter	50
CA701-15-2M-S	Din 35 Rail 15 deep slotted 2 meter	50

Website : rujutaent.com
Email : rujutaent@gmail.com
9082463426 , 8169580098
9820825440 , 9769789105

1 of 1