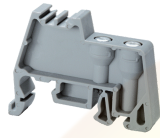


CA702



**connectwell**  
THE RIGHT CONNECTION

### End Clamp

End Clamps helps to secure the entire Terminal Block assembly on the Din Rail. End Clamps should be fixed on both sides of the Terminal Block assemblies.

#### PRODUCT SPECIFICATION

Length	44 mm
Width (Thickness)	9 mm

#### ORDERING INFORMATION

CAT. NO.	DESCRIPTION	STD. PACK
CA702	End Clamp in Polyamide 66 suitable for Din 32 / Din 35 / Din 35-15 Rails	50

#### NOTES

CA509/G1 marking tag can be used as an accessory.

Website : [rujutaent.com](http://rujutaent.com)  
Email : [rujutaent@gmail.com](mailto:rujutaent@gmail.com)  
9082463426 , 8169580098  
9820825440 , 9769789105

1 of 1