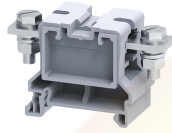


# CBB35/50



**connectwell**  
THE RIGHT CONNECTION

## 50 sq.mm Stud Type Power Terminal Blocks

CBB series Terminal Blocks are preferred for application using wires of large cross section. The Wire is crimped to a ring / fork lug and is screwed on to the flat current bar of the Terminal Block.

### TECHNICAL DATA

Rated Voltage	1000 V
Rated Current	150 A
Tightening Torque	3 Nm
Housing Material	Polymide
Product Function	Power Terminal Block
Wire Entry Orientation	Side Entry
Mounting Possibility	DIN 35/DIN 35-15 Rail
Stud Size	M6
Operated by	Nut Driver
Rated Surge Voltage	8 KV
Pollution Degree	3

### CONNECTION DATA

Conductor Cross Section Stranded min.	6 mm <sup>2</sup>
Conductor Cross Section Stranded max.	50 mm <sup>2</sup>
Conductor Cross Section AWG/Kcmil min	10 AWG
Conductor Cross Section AWG/Kcmil max	1/0 AWG
Conductor Cross Section Stranded with Ferrule/Lug min	6 mm <sup>2</sup>
Conductor Cross Section Stranded with Ferrule/Lug max	50 mm <sup>2</sup>
Conductor Cross Section Solid min	6 mm <sup>2</sup>
Stripping Length	mm

### DIMENSIONS

Height with DIN 35 x 15 mm rail	54.5 mm
Height with DIN 35 x 7.5 mm rail	47.5 mm
Length	75 mm
Width (Thickness)	32 mm

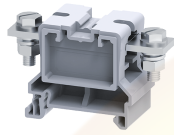
### ORDERING INFORMATION

CAT. NO.	DESCRIPTION	STD. PACK
CBB35/50	50 sq.mm Stud Type Power Terminal Block in Grey colour	10
CBB35/50R	50 sq.mm Stud Type Power Terminal Block in Red colour	10
CBB35/50Y	50 sq.mm Stud Type Power Terminal Block in Yellow colour	10
CBB35/50BU	50 sq.mm Stud Type Power Terminal Block in Blue colour	10
CBB35/50BK	50 sq.mm Stud Type Power Terminal Block in Black colour	10
CBB35/50GN	50 sq.mm Stud Type Power Terminal Block in Green colour	10

### ACCESSORIES

IMAGES	CAT. NO.	DESCRIPTION	STD. PACK
	CA701-1M	Din 35 Rail unslotted 1 meter	50
	CA701-2M	Din 35 Rail unslotted 2 meter	50
	CA701-2M-S	Din 35 Rail slotted 2 meter	50
	CA701-1M-S	Din 35 Rail slotted 1 meter	50
	CA701-15-1M	Din 35 Rail 15 deep unslotted 1 meter	50
	CA701-15-1M-S	Din 35 Rail 15 deep slotted 1 meter	50
	CA701-15-2M	Din 35 Rail 15 deep unslotted 2 meter	50
	CA701-15-2M-S	Din 35 Rail 15 deep slotted 2 meter	50
	CA202	End Clamp in Polyamide suitable for Din 35 / Din 35-15 Rails	25
	CA702	End Clamp in Polyamide 66 suitable for Din 32 / Din 35 / Din 35-15 Rails	50
	CA802	End Clamp in Polyamide suitable for Din 35 / Din 35-15 Rails	50
	PPCBB	Partition Plate in Grey colour	50
	CA790/2	Permanent Shorting Link for 2 way shorting	10
	CA790/3	Permanent Shorting Link for 3 way shorting	10
	CA509/K12	Marking Tag Blank suitable for CTS16U / CTS25UN / CGT16N / CDB25 / CMDB25 / CSC16T / CSCG16T Terminal Blocks	100
	CBBPC1/70	Protective cover is available in 70 mm Length	10
	CBBPC1/80	Protective cover is available in 80 mm Length	10
	CBBPC1/130	Protective cover is available in 130 mm Length	10
	CBBPC1/160	Protective cover is available in 160 mm Length	10
	CBBPC1/200	Protective cover is available in 200 mm Length	10
	CBBPC1/250	Protective cover is available in 250 mm Length	10

CBB35/50



**connectwell**  
THE RIGHT CONNECTION

APPROVALS



RATINGS AS PER STANDARDS

STANDARDS	UL 1059	IEC/EN60947-7-1	CSA C.22.2 No:158
Approvals	UL	CE	CSA
Conductor Cross Section Stranded min.	10 AWG	6 mm <sup>2</sup>	10 AWG
Conductor Cross Section Stranded max.	1/0 AWG	50 mm <sup>2</sup>	1/0 AWG
Rated Voltage	600 V	1000 V	600 V
Rated Current	150 A	150 A	150 A
Tightening Torque	27 lb-in	3 Nm	27 lb-in

Website : [rujutaent.com](http://rujutaent.com)  
Email : [rujutaent@gmail.com](mailto:rujutaent@gmail.com)  
9082463426 , 8169580098  
9820825440 , 9769789105