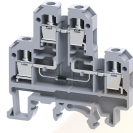


# CDL4UED3



4 sq.mm Terminal Blocks with diode circuit - D3 configuration

Double Level Terminal Block are available with diode circuit for reverse polarity protection.

### TECHNICAL DATA

|                        |  |
|------------------------|--|
| Rated Voltage          | 500 V                                      |
| Rated Current          | 32 A                                       |
| Tightening Torque      | 0.5 Nm                                     |
| Housing Material       | Polymide                                   |
| Product Function       | With Electronic Components: Diode/Resistor |
| Wire Entry Orientation | Side Entry                                 |
| Mounting Possibility   | DIN 32/DIN 35/DIN 35-15 Rail               |
| Screw Size             | M3   |
| Operated by            | Screwdriver                                |

### CONNECTION DATA

|   |                     |
|---|---------------------|
| Conductor Cross Section Stranded min.                 | 0.2 mm <sup>2</sup> |
| Conductor Cross Section Stranded max.                 | 4 mm <sup>2</sup>   |
| Conductor Cross Section AWG/Kcmil min                 | 22 AWG              |
| Conductor Cross Section AWG/Kcmil max                 | 10 AWG              |
| Conductor Cross Section Stranded with Ferrule/Lug min | 0.2 mm <sup>2</sup> |
| Conductor Cross Section Stranded with Ferrule/Lug max | 4 mm <sup>2</sup>   |
| 2 Conductors with same Cross Section Stranded min     | 0.2 mm <sup>2</sup> |
| 2 Conductor with same Cross Section Stranded max      | 2.5 mm <sup>2</sup> |
| Conductor Cross Section Solid min                     | 0.2 mm <sup>2</sup> |
| Conductor Cross Section Solid max                     | 6 mm <sup>2</sup>   |
| Stripping Length                                      | 9 mm                |

### DIMENSIONS

|                                  |         |
|----------------------------------|---------|
| Height with DIN 32 rail          | 60.3 mm |
| Height with DIN 35 x 15 mm rail  | 63.1 mm |
| Height with DIN 35 x 7.5 mm rail | 55.7 mm |
| Length                           | 55.5 mm |
| Width (Thickness)                | 6 mm    |

### DIODE SPECIFICATIONS

|                       |        |
|-----------------------|--------|
| Diode Type            | 1N4007 |
| Diode Reverse Voltage | 1000 V |
| Diode Forward Current | 1 A    |
| Diode Type            | 1N4007 |
| Diode Reverse Voltage | 1000 V |
| Diode Forward Current | 1 A    |
| Diode Type            | 1N4007 |
| Diode Reverse Voltage | 1000 V |

### DIODE SPECIFICATIONS

|                       |        |
|-----------------------|--------|
| Diode Forward Current | 1 A    |
| Diode Type            | 1N4007 |
| Diode Reverse Voltage | 1000 V |
| Diode Forward Current | 1 A    |

### ORDERING INFORMATION

| CAT. NO. | DESCRIPTION  | STD. PACK |
|----------|--|-----------|
| CDL4UED3 | 4 sq.mm Terminal Block with electronic component in Grey colour. | 100       |

### ACCESSORIES

| IMAGES | CAT. NO.      | DESCRIPTION  | STD. PACK |
|--------|---------------|--|-----------|
|        | CA501-1M      | Din 32 Rail unslotted 1 meter  | 50        |
|        | CA501-1M-S    | Din 32 Rail slotted 1 meter  | 50        |
|        | CA501-2M      | Din 32 Rail unslotted 2 meter  | 50        |
|        | CA501-2M-S    | Din 32 Rail slotted 2 meter  | 50        |
|        | CA701-1M      | Din 35 Rail unslotted 1 meter  | 50        |
|        | CA701-2M      | Din 35 Rail unslotted 2 meter  | 50        |
|        | CA701-2M-S    | Din 35 Rail slotted 2 meter  | 50        |
|        | CA701-1M-S    | Din 35 Rail slotted 1 meter  | 50        |
|        | CA701-15-1M   | Din 35 Rail 15 deep unslotted 1 meter  | 50        |
|        | CA701-15-1M-S | Din 35 Rail 15 deep slotted 1 meter  | 50        |
|        | CA701-15-2M   | Din 35 Rail 15 deep unslotted 2 meter  | 50        |
|        | CA701-15-2M-S | Din 35 Rail 15 deep slotted 2 meter  | 50        |
|        | EPCDL4U       | End Plate in Grey colour suitable for CDL4U / CDL4U(I.S) / CDL4U(E) Terminal Block | 50        |
|        | CA703/1       | Permanent Shorting Link for 2 way shorting   | 100       |
|        | CA704/1       | Permanent Shorting Link for 3 way shorting   | 100       |
|        | CA705/1       | Permanent Shorting Link for 4 way shorting   | 100       |
|        | CA732/10      | Permanent Shorting Link for 10 way shorting  | 100       |
|        | CA732/10-A    | Permanent Shorting Link (Breakable) for 10 way shorting                            | 100       |
|        | CA732/100     | Permanent Shorting Link for 100 way shorting                                       | 100       |
|        | CA607/S/Q     | Shorting Sleeve and Screw  | 100       |

CDL4UED3



**connectwell**  
THE RIGHT CONNECTION

**ACCESSORIES**

| IMAGES | CAT. NO.   | DESCRIPTION  | STD. PACK |
|--------|------------|--|-----------|
|        | CA509/K2   | Marking Tag Blank suitable for CDL4U / CDL4U(I.S) / CTL2.5U / CTL2.5UH / CTL2.5UL / CTL2.5HUL / CTL2.5U(I.S) / CTL2.5U(I.S)D2 / CGMT4 / CSFL4U / CSFL4U(L) / CMT4 / CMB4 / ASF4 / ASF4(L) / CTS2.5() | 100       |
|        | CDL4USP    | Spacer for Double Level Terminal Block   | 10        |
|        | SCS0.6/3.5 | Electricians Screwdriver for slotted screws  | 10        |

**APPROVALS**



**CIRCUIT DIAGRAM**



**RATINGS AS PER STANDARDS**

| STANDARDS                             | UL 1059 | CSA C.22.2 No:158 | IEC/EN60947-7-1     |
|---------------------------------------|---------|-------------------|---------------------|
| Approvals                             | UL      | CSA               | CE                  |
| Conductor Cross Section Stranded min. | 22 AWG  | 22 AWG            | 0.2 mm <sup>2</sup> |
| Conductor Cross Section Stranded max. | 10 AWG  | 10 AWG            | 4 mm <sup>2</sup>   |
| Rated Voltage                         | 600 V   | 300 V             | 500 V               |
| Rated Current                         | 35 A    | 25 A              | 32 A                |
| Tightening Torque                     | 7 lb-in | 7 lb-in           | 0.5 Nm              |