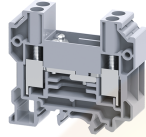


# CDTTUSH



## Disconnect & Test Terminal Block

These Terminal Blocks are used for measuring, control and regulatory circuits. They Provide a clear functional advantage for devices having utility instruments and associated transformers. In this Terminal Block disconnection is achieved by means of a slide link operated by screwdriver. Specially designed socket headed screws act as test monitoring points in disconnecting & Test Terminal Block.

### TECHNICAL DATA

Rated Voltage	160 V
Rated Current	10 A
Tightening Torque	1.2 Nm
Housing Material	Polyamide
Product Function	Sliding Type Disconnect and Test
Wire Entry Orientation	Side Entry
Mounting Possibility	DIN 32/DIN 35/DIN 35-15 Rail
Screw Size	M3.5
Operated by	Screwdriver
Rated Surge Voltage	2.5 KV
Pollution Degree	3

### CONNECTION DATA

Conductor Cross Section Stranded min.	1.5 mm <sup>2</sup>
Conductor Cross Section Stranded max.	10 mm <sup>2</sup>
Conductor Cross Section AWG/Kcmil min	16 AWG
Conductor Cross Section AWG/Kcmil max	8 AWG
Conductor Cross Section Stranded with Ferrule/Lug min	1.5 mm <sup>2</sup>
Conductor Cross Section Stranded with Ferrule/Lug max	10 mm <sup>2</sup>
2 Conductors with same Cross Section Stranded min	1.5 mm <sup>2</sup>
2 Conductor with same Cross Section Stranded max	4 mm <sup>2</sup>
Conductor Cross Section Solid min	1.5 mm <sup>2</sup>
Conductor Cross Section Solid max	10 mm <sup>2</sup>
2 Conductors with same Cross Section Stranded with TWIN Ferrule/Lug min	1.5 mm <sup>2</sup>
2 Conductor with same Cross Section Stranded with TWIN Ferrule/Lug max	4 mm <sup>2</sup>
Stripping Length	12 mm
Internal Cylindrical Gauge	A5

### DIMENSIONS

Height with DIN 32 rail	63.7 mm
Height with DIN 35 x 15 mm rail	65.7 mm
Height with DIN 35 x 7.5 mm rail	58.7 mm
Length	63 mm

### DIMENSIONS

Width (Thickness)	16 mm
-------------------	-------

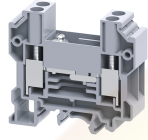
### ORDERING INFORMATION

CAT. NO.	DESCRIPTION	STD. PACK
CDTTUSH	6 sq.mm Disconnect & Test Terminal Block in Grey colour	50
CDTTUSHBU	6 sq.mm Disconnect & Test Terminal Block in Blue colour	50

### ACCESSORIES

IMAGES	CAT. NO.	DESCRIPTION	STD. PACK
	CA501-1M	Din 32 Rail unslotted 1 meter	50
	CA501-1M-S	Din 32 Rail slotted 1 meter	50
	CA501-2M	Din 32 Rail unslotted 2 meter	50
	CA501-2M-S	Din 32 Rail slotted 2 meter	50
	CA701-1M	Din 35 Rail unslotted 1 meter	50
	CA701-2M	Din 35 Rail unslotted 2 meter	50
	CA701-2M-S	Din 35 Rail slotted 2 meter	50
	CA701-1M-S	Din 35 Rail slotted 1 meter	50
	CA701-15-1M	Din 35 Rail 15 deep unslotted 1 meter	50
	CA701-15-1M-S	Din 35 Rail 15 deep slotted 1 meter	50
	CA701-15-2M	Din 35 Rail 15 deep unslotted 2 meter	50
	CA701-15-2M-S	Din 35 Rail 15 deep slotted 2 meter	50
	CA702	End Clamp in Polyamide 66 suitable for Din 32 / Din 35 / Din 35-15 Rails	50
	CA802	End Clamp in Polyamide suitable for Din 35 / Din 35-15 Rails	50
	EPCDTTU	End Plate in Grey colour suitable	50

CDDTUSH



**connectwell**  
THE RIGHT CONNECTION

**ACCESSORIES**

IMAGES	CAT. NO.	DESCRIPTION	STD. PACK
	CA710/2	External Comb Type Shorting Link available in 2 Pole	100
	CA710/3	External Comb Type Shorting Link available in 3 Pole	50
	CA710/4	External Comb Type Shorting Link available in 4 Pole	50
	CA710/10	External Comb Type Shorting Link available in 10 Pole	20
	QJ8/2	2 Pole shorting Plug for CDS6U Terminal Block	25
	CA509/K8	Marking Tag with Vertical printing.	100
	SCS1/5.5	Electricians Screwdriver for slotted screws	10

**RATINGS AS PER STANDARDS**

STANDARDS	UL 1059	CSA C.22.2 No:158	IEC 60947-7-1
Approvals	UL	CSA	CE
Conductor Cross Section Stranded min.	16 AWG	16 AWG	1.5 mm <sup>2</sup>
Conductor Cross Section Stranded max.	8 AWG	8 AWG	6 mm <sup>2</sup>
Rated Voltage	300 V	300 V	160 V
Rated Current	25 A	25 A	10 A
Tightening Torque	14 lb-in	14 lb-in	1.2 Nm

Website : [rujutaent.com](http://rujutaent.com)  
 Email : [rujutaent@gmail.com](mailto:rujutaent@gmail.com)  
 9082463426 , 8169580098  
 9820825440 , 9769789105