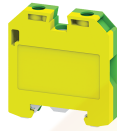


# CGMT4



## Micro - 4 sq.mm Ground/Earth Terminal Blocks.

These blocks are used for terminating Grounding/Earthing wires. They are green-yellow coded as per industry standards. CGMT4 is suitable for DIN 15 micro rail & can be used in conjunction with CMT4 Terminal Blocks.

### TECHNICAL DATA

Tightening Torque	0.5 Nm
Housing Material	Polymide
Product Function	Earthing/Grounding
Wire Entry Orientation	Side Entry
Mounting Possibility	DIN 15 Rail
Screw Size	M3
Operated by	Screwdriver
Rated Surge Voltage	4 KV
Pollution Degree	3

### CONNECTION DATA

Conductor Cross Section Stranded min.	0.2 mm <sup>2</sup>
Conductor Cross Section Stranded max.	4 mm <sup>2</sup>
Conductor Cross Section AWG/Kcmil min	22 mm <sup>2</sup>
Conductor Cross Section AWG/Kcmil max	10 mm <sup>2</sup>
Conductor Cross Section Stranded with Ferrule/Lug min	0.2 mm <sup>2</sup>
Conductor Cross Section Stranded with Ferrule/Lug max	4 mm <sup>2</sup>
2 Conductors with same Cross Section Stranded min	0.2 mm <sup>2</sup>
2 Conductor with same Cross Section Stranded max	2.5 mm <sup>2</sup>
Conductor Cross Section Solid min	0.2 mm <sup>2</sup>
Conductor Cross Section Solid max	6 mm <sup>2</sup>
2 Conductors with same Cross Section Stranded with TWIN Ferrule/Lug min	0.2 mm <sup>2</sup>
2 Conductor with same Cross Section Stranded with TWIN Ferrule/Lug max	2.5 mm <sup>2</sup>
Stripping Length	8 mm
Internal Cylindrical Guage	A4

### DIMENSIONS

Height with DIN 15 x 5 mm rail	30.7 mm
Height with DIN 35 x 15 mm rail	mm
Length	27 mm
Width (Thickness)	6 mm

### ORDERING INFORMATION

CAT. NO.	DESCRIPTION	STD. PACK
CGMT4	4 sqmm Ground/Earth terminal block in Green-Yellow colour.	100

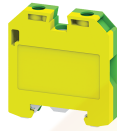
### ACCESSORIES

IMAGES	CAT. NO.	DESCRIPTION	STD. PACK
	CA601-1M	Din 15 Rail slotted 1 meter	50
	CA509/K2	Marking Tag Blank suitable for CDL4U / CDL4U(I.S) / CTL2.5U / CTL2.5UH / CTL2.5UL / CTL2.5HUL / CTL2.5U(I.S) / CTL2.5U(I.S)D2 / CGMT4 / CSFL4U / CSFL4U(L) / CMT4 / CMB4 / ASF4 / ASF4(L) / CTS2.5()	100
	SCS0.6/3.5	Electricians Screwdriver for slotted screws	10

### APPROVALS



CGMT4



**connectwell**  
THE RIGHT CONNECTION

**RATINGS AS PER STANDARDS**

<b>STANDARDS</b>	<b>UL 1059</b>	<b>CSA C.22.2 No:158</b>	<b>DIN EN60947-7-2</b>
Approvals	UL	CSA	VDE
Conductor Cross Section Stranded min.	22 AWG	22 AWG	0.5 mm <sup>2</sup>
Conductor Cross Section Stranded max.	10 AWG	10 AWG	4 mm <sup>2</sup>
Tightening Torque	7 lb-in	7 lb-in	0.5 Nm
<b>STANDARDS</b>	<b>IEC/EN60947-7-2</b>	<b>EN60079-7</b>	<b>EN60079-7</b>
Approvals	CE	ATEX	ATEX-IECex
Conductor Cross Section Stranded min.	0.2 mm <sup>2</sup>	0.5 mm <sup>2</sup>	0.5 mm <sup>2</sup>
Conductor Cross Section Stranded max.	4 mm <sup>2</sup>	4 mm <sup>2</sup>	4 mm <sup>2</sup>
Tightening Torque	0.5 Nm	0.5 Nm	0.5 Nm
Operating Temperature Range		-40 to +85 °C	

Website : [rujutaent.com](http://rujutaent.com)  
Email : [rujutaent@gmail.com](mailto:rujutaent@gmail.com)  
9082463426 , 8169580098  
9820825440 , 9769789105