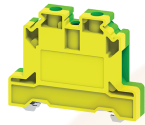


CGT10N



**connectwell**  
THE RIGHT CONNECTION

### 10 sq.mm Ground / Earth Terminal Blocks

These Terminal Blocks are used for Grounding / Earthing Wires. They are Green-Yellow colour coded as per industries standard. They have the same top profile as their respective feed through Terminal Blocks.

#### TECHNICAL DATA

Tightening Torque	1.2 Nm
Housing Material	Polymide
Product Function	Earthing/Grounding
Wire Entry Orientation	Side Entry
Mounting Possibility	DIN 35/DIN 35-15 Rail
Screw Size	M4
Operated by	Screwdriver
Rated Surge Voltage	8 KV
Pollution Degree	3

#### CONNECTION DATA

Conductor Cross Section Stranded min.	0.2 mm <sup>2</sup>
Conductor Cross Section Stranded max.	10 mm <sup>2</sup>
Conductor Cross Section AWG/Kcmil min	16 AWG
Conductor Cross Section AWG/Kcmil max	6 AWG
Conductor Cross Section Stranded with Ferrule/Lug min	0.2 mm <sup>2</sup>
Conductor Cross Section Stranded with Ferrule/Lug max	10 mm <sup>2</sup>
2 Conductors with same Cross Section Stranded min	0.2 mm <sup>2</sup>
2 Conductor with same Cross Section Stranded max	6 mm <sup>2</sup>
2 Conductors with same Cross Section Stranded with TWIN Ferrule/Lug min	0.2 mm <sup>2</sup>
2 Conductor with same Cross Section Stranded with TWIN Ferrule/Lug max	6 mm <sup>2</sup>
Stripping Length	11 mm
Internal Cylindrical Guage	A6

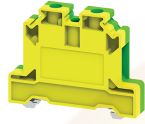
#### DIMENSIONS

Height with DIN 35 x 15 mm rail	56 mm
Height with DIN 35 x 7.5 mm rail	48.5 mm
Length	55 mm
Width (Thickness)	10 mm

#### ORDERING INFORMATION

CAT. NO.	DESCRIPTION	STD. PACK
CGT10N	10 sq.mm Grounding / Earthing Terminal Block.	50

CGT10N



**connectwell**  
THE RIGHT CONNECTION

**RATINGS AS PER STANDARDS**

<b>STANDARDS</b>	<b>UL 1059</b>	<b>EN60079-7</b>	<b>CSA C.22.2 No:158</b>
Approvals	UL	ATEX-IECex	CSA
Conductor Cross Section Stranded min.	16 AWG	1.5 mm <sup>2</sup>	16 AWG
Conductor Cross Section Stranded max.	6 AWG	10 mm <sup>2</sup>	6 AWG
Tightening Torque	14 lb-in	1.2 Nm	14 lb-in
<b>STANDARDS</b>	<b>EN60079-7</b>	<b>IEC/EN60947-7-2</b>	
Approvals	ATEX	CE	
Conductor Cross Section Stranded min.	1.5 mm <sup>2</sup>	0.2 mm <sup>2</sup>	
Conductor Cross Section Stranded max.	10 mm <sup>2</sup>	10 mm <sup>2</sup>	
Tightening Torque	1.2 Nm	1.2 Nm	
Operating Temperature Range	-40 to +85 °C		

Website : [rujutaent.com](http://rujutaent.com)  
Email : [rujutaent@gmail.com](mailto:rujutaent@gmail.com)  
9082463426 , 8169580098  
9820825440 , 9769789105