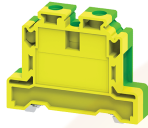


CGT16N



**connectwell**  
THE RIGHT CONNECTION

16 sq.mm Ground / Earth Terminal Blocks

These Terminal Blocks are used for Grounding / Earthing Wires. They are Green-Yellow colour coded as per industries standard. They have the same top profile as their respective feed through Terminal Blocks.

**TECHNICAL DATA**

Tightening Torque	1.2 Nm
Housing Material	Polymide
Product Function	Earthing/Grounding
Wire Entry Orientation	Side Entry
Mounting Possibility	DIN 35/DIN 35-15 Rail
Screw Size	M4
Operated by	Screwdriver
Rated Surge Voltage	8 KV
Pollution Degree	3

**CONNECTION DATA**

Conductor Cross Section Stranded min.	0.2 mm <sup>2</sup>
Conductor Cross Section Stranded max.	16 mm <sup>2</sup>
Conductor Cross Section AWG/Kcmil min	20 AWG
Conductor Cross Section AWG/Kcmil max	4 AWG
Conductor Cross Section Stranded with Ferrule/Lug min	0.2 mm <sup>2</sup>
Conductor Cross Section Stranded with Ferrule/Lug max	16 mm <sup>2</sup>
2 Conductors with same Cross Section Stranded min	0.2 mm <sup>2</sup>
2 Conductor with same Cross Section Stranded max	10 mm <sup>2</sup>
2 Conductors with same Cross Section Stranded with TWIN Ferrule/Lug min	0.2 mm <sup>2</sup>
2 Conductor with same Cross Section Stranded with TWIN Ferrule/Lug max	10 mm <sup>2</sup>
Stripping Length	12 mm
Internal Cylindrical Guage	A7

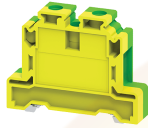
**DIMENSIONS**

Height with DIN 35 x 15 mm rail	56 mm
Height with DIN 35 x 7.5 mm rail	48.5 mm
Length	55 mm
Width (Thickness)	12 mm

**ORDERING INFORMATION**

CAT. NO.	DESCRIPTION	STD. PACK
CGT16N	16 sq.mm Grounding / Earthing Terminal Block.	50

CGT16N



**connectwell**  
THE RIGHT CONNECTION

**RATINGS AS PER STANDARDS**

STANDARDS	UL 1059	IEC/EN60947-7-2	CSA C.22.2 No:158
Approvals	UL	CE	CSA
Conductor Cross Section Stranded min.	20 AWG	0.2 mm <sup>2</sup>	20 AWG
Conductor Cross Section Stranded max.	4 AWG	16 mm <sup>2</sup>	4 AWG
Tightening Torque	14 lb-in	2 Nm	14 lb-in

STANDARDS	EN60079-7	EN60079-7
Approvals	ATEX	ATEX-IECex
Conductor Cross Section Stranded min.	2.5 mm <sup>2</sup>	2.5 mm <sup>2</sup>
Conductor Cross Section Stranded max.	16 mm <sup>2</sup>	16 mm <sup>2</sup>
Tightening Torque	2 Nm	2 Nm
Operating Temperature Range	-40 to +85 °C	

Website : [rujutaent.com](http://rujutaent.com)  
Email : [rujutaent@gmail.com](mailto:rujutaent@gmail.com)  
9082463426 , 8169580098  
9820825440 , 9769789105