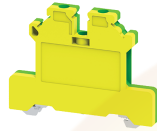


CGT4N



4 sq.mm Ground / Earth Terminal Blocks

These Terminal Blocks are used for Grounding / Earthing Wires. They are Green-Yellow colour coded as per industries standard. They have the same top profile as their respective feed through Terminal Blocks.

TECHNICAL DATA

| | |
|------------------------|-----------------------|
| Tightening Torque | 0.4 Nm |
| Housing Material | Polymide |
| Product Function | Earthing/Grounding |
| Wire Entry Orientation | Side Entry |
| Mounting Possibility | DIN 35/DIN 35-15 Rail |
| Screw Size | M3 |
| Operated by | Screwdriver |
| Rated Surge Voltage | 8 KV |
| Pollution Degree | 3 |

CONNECTION DATA

| | |
|---|---------------------|
| Conductor Cross Section Stranded min. | 0.2 mm ² |
| Conductor Cross Section Stranded max. | 4 mm ² |
| Conductor Cross Section AWG/Kcmil min | 22 AWG |
| Conductor Cross Section AWG/Kcmil max | 10 AWG |
| Conductor Cross Section Stranded with Ferrule/Lug min | 0.2 mm ² |
| Conductor Cross Section Stranded with Ferrule/Lug max | 4 mm ² |
| 2 Conductors with same Cross Section Stranded min | 0.2 mm ² |
| 2 Conductor with same Cross Section Stranded max | 2.5 mm ² |
| Conductor Cross Section Solid min | 0.2 mm ² |
| Conductor Cross Section Solid max | 6 mm ² |
| 2 Conductors with same Cross Section Stranded with TWIN Ferrule/Lug min | 0.2 mm ² |
| 2 Conductor with same Cross Section Stranded with TWIN Ferrule/Lug max | 2.5 mm ² |
| Stripping Length | 8 mm |
| Internal Cylindrical Guage | A4 |

DIMENSIONS

| | |
|----------------------------------|---------|
| Height with DIN 35 x 15 mm rail | 54.4 mm |
| Height with DIN 35 x 7.5 mm rail | 47 mm |
| Length | 54.2 mm |
| Width (Thickness) | 6 mm |

ORDERING INFORMATION

| CAT. NO. | DESCRIPTION | STD. PACK |
|----------|--|-----------|
| CGT4N | 4 sq.mm Grounding / Earthing Terminal Block. | 50 |

ACCESSORIES

| IMAGES | CAT. NO. | DESCRIPTION | STD. PACK |
|--------|---------------|---|-----------|
| | CA701-1M | Din 35 Rail unslotted 1 meter | 50 |
| | CA701-2M | Din 35 Rail unslotted 2 meter | 50 |
| | CA701-2M-S | Din 35 Rail slotted 2 meter | 50 |
| | CA701-1M-S | Din 35 Rail slotted 1 meter | 50 |
| | CA701-15-1M | Din 35 Rail 15 deep unslotted 1 meter | 50 |
| | CA701-15-1M-S | Din 35 Rail 15 deep slotted 1 meter | 50 |
| | CA701-15-2M | Din 35 Rail 15 deep unslotted 2 meter | 50 |
| | CA701-15-2M-S | Din 35 Rail 15 deep slotted 2 meter | 50 |
| | CA509/K6 | Blank Marking Tag | 100 |
| | SCS0.6/3.5 | Electricians Screwdriver for slotted screws | 10 |

APPROVALS



CGT4N



connectwell
THE RIGHT CONNECTION

RATINGS AS PER STANDARDS

| STANDARDS | UL 1059 | CSA C.22.2 No:158 | DIN EN60947-7-2 |
|---------------------------------------|------------------------|--------------------------|------------------------|
| Approvals | UL | CSA | VDE |
| Conductor Cross Section Stranded min. | 22 AWG | 22 AWG | 0.5 mm ² |
| Conductor Cross Section Stranded max. | 10 AWG | 10 AWG | 4 mm ² |
| Tightening Torque | 7 lb-in | 7 lb-in | 0.4 Nm |
| STANDARDS | IEC/EN60947-7-2 | EN60079-7 | EN60079-7 |
| Approvals | CE | ATEX | ATEX-IECex |
| Conductor Cross Section Stranded min. | 0.2 mm ² | 0.5 mm ² | 0.5 mm ² |
| Conductor Cross Section Stranded max. | 4 mm ² | 4 mm ² | 4 mm ² |
| Tightening Torque | 0.4 Nm | 0.4 Nm | 0.4 Nm |

Website : rujutaent.com
Email : rujutaent@gmail.com
9082463426 , 8169580098
9820825440 , 9769789105