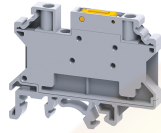


# CKT4SP



4 sq.mm Knife Type Disconnect & Test Terminal Blocks with Socket screws and with possibility of using Jumpers

These blocks are used measuring control and regulatory circuits. they provide a clear functional advantage for devices having utility instruments and associated transformers.in ckt4sp disconnection is achieved by lifting a lever which operates the knife contact. Specially designed socket headed screws act as test monitoring points in disconnecting & test Terminal blocks, also there is a possibility of jumpering between Terminal Blocks.

### TECHNICAL DATA

|                      |                                |
|----------------------|--------------------------------|
| Rated Voltage        | 1000 V                         |
| Rated Current        | 28 A                           |
| Tightening Torque    | 0.5 Nm                         |
| Housing Material     | Polymide                       |
| Product Function     | Knife Type Disconnect and Test |
| Mounting Possibility | DIN 32/DIN 35/DIN 35-15 Rail   |
| Screw Size           | M3                             |
| Operated by          | Screwdriver                    |
| Rated Surge Voltage  | 8 V                            |
| Pollution Degree     | 3                              |

### CONNECTION DATA

|   |                     |
|---|---------------------|
| Conductor Cross Section Stranded min.                                   | 0.2 mm <sup>2</sup> |
| Conductor Cross Section Stranded max.                                   | 4 mm <sup>2</sup>   |
| Conductor Cross Section AWG/Kcmil min                                   | 24 AWG              |
| Conductor Cross Section AWG/Kcmil max                                   | 10 AWG              |
| Conductor Cross Section Stranded with Ferrule/Lug min                   | 0.2 mm <sup>2</sup> |
| Conductor Cross Section Stranded with Ferrule/Lug max                   | 6 mm <sup>2</sup>   |
| 2 Conductors with same Cross Section Stranded min                       | 0.2 mm <sup>2</sup> |
| 2 Conductor with same Cross Section Stranded max                        | 2.5 mm <sup>2</sup> |
| Conductor Cross Section Solid min                                       | 0.2 mm <sup>2</sup> |
| Conductor Cross Section Solid max                                       | 6 mm <sup>2</sup>   |
| 2 Conductors with same Cross Section Stranded with TWIN Ferrule/Lug min | 0.2 mm <sup>2</sup> |
| 2 Conductor with same Cross Section Stranded with TWIN Ferrule/Lug max  | 2.5 mm <sup>2</sup> |
| Stripping Length  | 8 mm                |
| Internal Cylindrical Guage  | A4                  |

### DIMENSIONS

|                                  |         |
|----------------------------------|---------|
| Height with DIN 15 x 5 mm rail   | 46 mm   |
| Height with DIN 32 rail          | 51.5 mm |
| Height with DIN 35 x 15 mm rail  | 53.5 mm |
| Height with DIN 35 x 7.5 mm rail | 46 mm   |
| Length                           | 58.5 mm |
| Width (Thickness)                | 6 mm    |

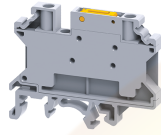
### ORDERING INFORMATION

| CAT. NO. | DESCRIPTION   | STD. PACK |
|----------|---|-----------|
| CKT4SP   | 4 sq.mm Knife Type Disconnect & Test Terminal Blocks with Socket screws and Jumper Possibility in Grey colour | 50        |
| CKT4SPBU | 4 sq.mm Knife Type Disconnect & Test Terminal Blocks with Socket screws and Jumper Possibility in Blue colour | 50        |

### ACCESSORIES

| IMAGES | CAT. NO.      | DESCRIPTION  | STD. PACK |
|--------|---------------|--|-----------|
|        | CA501-1M      | Din 32 Rail unslotted 1 meter  | 50        |
|        | CA501-1M-S    | Din 32 Rail slotted 1 meter  | 50        |
|        | CA501-2M      | Din 32 Rail unslotted 2 meter  | 50        |
|        | CA501-2M-S    | Din 32 Rail slotted 2 meter  | 50        |
|        | CA701-1M      | Din 35 Rail unslotted 1 meter  | 50        |
|        | CA701-2M      | Din 35 Rail unslotted 2 meter  | 50        |
|        | CA701-2M-S    | Din 35 Rail slotted 2 meter  | 50        |
|        | CA701-1M-S    | Din 35 Rail slotted 1 meter  | 50        |
|        | CA701-15-1M   | Din 35 Rail 15 deep unslotted 1 meter                                    | 50        |
|        | CA701-15-1M-S | Din 35 Rail 15 deep slotted 1 meter                                      | 50        |
|        | CA701-15-2M   | Din 35 Rail 15 deep unslotted 2 meter                                    | 50        |
|        | CA701-15-2M-S | Din 35 Rail 15 deep slotted 2 meter                                      | 50        |
|        | CA702         | End Clamp in Polyamide 66 suitable for Din 32 / Din 35 / Din 35-15 Rails | 50        |
|        | CA802         | End Clamp in Polyamide suitable for Din 35 / Din 35-15 Rails             | 50        |
|        | CA722/2       | Pre Assembled Shorting Link assemblies with 2 poles                      | 100       |
|        | CA722/3       | Pre Assembled Shorting Links assemblies with 3 poles                     | 100       |
|        | CA722/4       | Pre Assembled Shorting Links assemblies with 4 poles                     | 100       |
|        | CA722/10      | Pre Assembled Shorting Links assemblies with 10 poles                    | 10        |
|        | CA722/100     | Pre Assembled Shorting Links assemblies with 100 poles                   | 10        |

CKT4SP

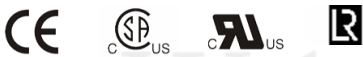


**connectwell**  
THE RIGHT CONNECTION

**ACCESSORIES**

| IMAGES | CAT. NO.     | DESCRIPTION  | STD. PACK |
|--------|--------------|--|-----------|
|        | CA742/2      | Insulated Pre assembled Shorting Link for 2 way shorting   | 100       |
|        | CA742/3      | Insulated Pre assembled Shorting Link for 3 way shorting   | 100       |
|        | CA742/4      | Insulated Pre assembled Shorting Link for 4 way shorting   | 100       |
|        | CA742/10     | Insulated Pre assembled Shorting Link for 10 way shorting  | 10        |
|        | CA742/100    | Insulated Pre assembled Shorting Link for 100 way shorting | 10        |
|        | CA714/2      | External Comb Type Shorting Link Available in 2 pole       | 100       |
|        | CA714/3      | External Comb Type Shorting Link Available in 3 pole       | 100       |
|        | CA714/4      | External Comb Type Shorting Link Available in 4 pole       | 100       |
|        | CA714/10     | External Comb Type Shorting Link Available in 10 pole      | 20        |
|        | CA703/1      | Permanent Shorting Link for 2 way shorting                 | 100       |
|        | CA704/1      | Permanent Shorting Link for 3 way shorting                 | 100       |
|        | CA705/1      | Permanent Shorting Link for 4 way shorting                 | 100       |
|        | CA732/10     | Permanent Shorting Link for 10 way shorting                | 100       |
|        | CA732/10-A   | Permanent Shorting Link (Breakable) for 10 way shorting    | 100       |
|        | CA732/100    | Permanent Shorting Link for 100 way shorting               | 100       |
|        | CA707/S/Q/01 | Shorting Sleeve and Screw                                  | 100       |
|        | CA509/K6     | Blank Marking Tag  | 100       |
|        | SCS0.6/3.5   | Electricians Screwdriver for slotted screws                | 10        |

**APPROVALS**



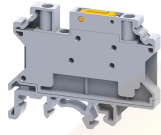
**NOTES**

This Terminal can also be mounted on Din15 rail i.e CA601

**RATINGS AS PER STANDARDS**

| STANDARDS                             | UL 1059 | IEC/EN60947-7-1     | CSA C.22.2 No:158 |
|---------------------------------------|---------|---------------------|-------------------|
| Approvals                             | UL      | CE                  | CSA               |
| Conductor Cross Section Stranded min. | 24 AWG  | 0.2 mm <sup>2</sup> | 24 AWG            |
| Conductor Cross Section Stranded max. | 10 AWG  | 4 mm <sup>2</sup>   | 10 AWG            |
| Rated Voltage                         | 600 V   | 1000 V              | 600 V             |

CKT4SP



**connectwell**  
THE RIGHT CONNECTION

RATINGS AS PER STANDARDS

|                   |           |        |           |
|-------------------|-----------|--------|-----------|
| Rated Current     | 30 A      | 28 A   | 30 A      |
| Tightening Torque | 4.5 lb-in | 0.5 Nm | 4.5 lb-in |

Website : [rujutaent.com](http://rujutaent.com)  
Email : [rujutaent@gmail.com](mailto:rujutaent@gmail.com)  
9082463426 , 8169580098  
9820825440 , 9769789105