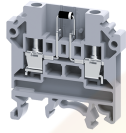


CKT4UD1



**connectwell**  
THE RIGHT CONNECTION

Knife Type 4 sq.mm Disconnect & Test Terminal Blocks with diode - D1 Configuration.

Terminal Block are available with Diode Circuits

**TECHNICAL DATA**

|                        |  |
|------------------------|--|
| Rated Voltage          | 500 V                                      |
| Tightening Torque      | 0.5 Nm                                     |
| Housing Material       | Polymide                                   |
| Product Function       | With Electronic Components: Diode/Resistor |
| Wire Entry Orientation | Side Entry                                 |
| Mounting Possibility   | DIN 32/DIN 35/DIN 35-15 Rail               |
| Screw Size             | M3   |
| Operated by            | Screwdriver                                |

**CONNECTION DATA**

|   |                     |
|---|---------------------|
| Conductor Cross Section Stranded min.                 | 0.2 mm <sup>2</sup> |
| Conductor Cross Section Stranded max.                 | 4 mm <sup>2</sup>   |
| Conductor Cross Section AWG/Kcmil min                 | 22 AWG              |
| Conductor Cross Section AWG/Kcmil max                 | 10 AWG              |
| Conductor Cross Section Stranded with Ferrule/Lug min | 0.2 mm <sup>2</sup> |
| Conductor Cross Section Stranded with Ferrule/Lug max | 4 mm <sup>2</sup>   |
| 2 Conductors with same Cross Section Stranded min     | 0.2 mm <sup>2</sup> |
| 2 Conductor with same Cross Section Stranded max      | 2.5 mm <sup>2</sup> |
| Conductor Cross Section Solid min                     | 0.2 mm <sup>2</sup> |
| Conductor Cross Section Solid max                     | 6 mm <sup>2</sup>   |
| Stripping Length                                      | 9 mm                |

**DIMENSIONS**

|                                  |         |
|----------------------------------|---------|
| Height with DIN 32 rail          | 54.5 mm |
| Height with DIN 35 x 15 mm rail  | 56 mm   |
| Height with DIN 35 x 7.5 mm rail | 48.3 mm |
| Length                           | 46.3 mm |
| Width (Thickness)                | 6 mm    |

**DIODE SPECIFICATIONS**

|                       |        |
|-----------------------|--------|
| Diode Type            | 1N4007 |
| Diode Reverse Voltage | 1000 V |
| Diode Forward Current | 1 A    |
| Diode Type            | 1N4007 |
| Diode Reverse Voltage | 1000 V |
| Diode Forward Current | 1 A    |
| Diode Type            | 1N4007 |
| Diode Reverse Voltage | 1000 V |

**DIODE SPECIFICATIONS**

|                       |        |
|-----------------------|--------|
| Diode Forward Current | 1 A    |
| Diode Type            | 1N4007 |
| Diode Reverse Voltage | 1000 V |
| Diode Forward Current | 1 A    |

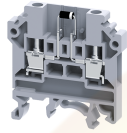
**ORDERING INFORMATION**

| CAT. NO. | DESCRIPTION                                      | STD. PACK |
|----------|--|-----------|
| CKT4UD1  | 4 sq.mm Terminal Block with Electronic Component | 50        |

**ACCESSORIES**

| IMAGES | CAT. NO.      | DESCRIPTION  | STD. PACK |
|--------|---------------|--|-----------|
|        | CA501-1M      | Din 32 Rail unslotted 1 meter  | 50        |
|        | CA501-1M-S    | Din 32 Rail slotted 1 meter  | 50        |
|        | CA501-2M      | Din 32 Rail unslotted 2 meter  | 50        |
|        | CA501-2M-S    | Din 32 Rail slotted 2 meter  | 50        |
|        | CA701-1M      | Din 35 Rail unslotted 1 meter  | 50        |
|        | CA701-2M      | Din 35 Rail unslotted 2 meter  | 50        |
|        | CA701-2M-S    | Din 35 Rail slotted 2 meter  | 50        |
|        | CA701-1M-S    | Din 35 Rail slotted 1 meter  | 50        |
|        | CA701-15-1M   | Din 35 Rail 15 deep unslotted 1 meter                                    | 50        |
|        | CA701-15-1M-S | Din 35 Rail 15 deep slotted 1 meter                                      | 50        |
|        | CA701-15-2M   | Din 35 Rail 15 deep unslotted 2 meter                                    | 50        |
|        | CA701-15-2M-S | Din 35 Rail 15 deep slotted 2 meter                                      | 50        |
|        | CA702         | End Clamp in Polyamide 66 suitable for Din 32 / Din 35 / Din 35-15 Rails | 50        |
|        | CA802         | End Clamp in Polyamide suitable for Din 35 / Din 35-15 Rails             | 50        |
|        | EPCKT4U       | End Plate in Grey colour   | 50        |
|        | CA509/K6      | Blank Marking Tag  | 100       |
|        | SCS0.6/3.5    | Electricians Screwdriver for slotted screws                              | 10        |

CKT4UD1



**connectwell**  
THE RIGHT CONNECTION

APPROVALS

CE

RATINGS AS PER STANDARDS

| STANDARDS                             | IEC/EN60947-7-1     |
|---------------------------------------|---------------------|
| Approvals                             | CE                  |
| Conductor Cross Section Stranded min. | 0.2 mm <sup>2</sup> |
| Conductor Cross Section Stranded max. | 4 mm <sup>2</sup>   |
| Rated Voltage                         | 500 V               |
| Tightening Torque                     | 0.5 Nm              |

Website : [rujutaent.com](http://rujutaent.com)  
Email : [rujutaent@gmail.com](mailto:rujutaent@gmail.com)  
9082463426 , 8169580098  
9820825440 , 9769789105