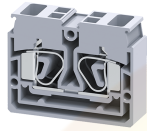


CSCP2.5T2



connectwell
THE RIGHT CONNECTION

2.5 sq.mm Spring Clamp Panel Mount Terminal Blocks with multiple connection points.

These blocks are an excellent solution for extremely compact wiring applications. The Terminal Blocks are "modular" and can be stacked to form multi pole assemblies. The stacked assemblies are mounted on the panel surface using mounting End Plates at both the ends. Insulated External shorting links can be used for cross connection. In CSCP2.5T2 Terminal Blocks, there are two connection points each on both sides

TECHNICAL DATA

Rated Voltage	800 V
Rated Current	24 A
Housing Material	Polymide
Product Function	Feed Through
Wire Entry Orientation	Top Entry
Mounting Possibility	Panel/Surface
Operated by	Screwdriver
Rated Surge Voltage	8 KV
Pollution Degree	3

CONNECTION DATA

Conductor Cross Section Stranded min.	0.2 mm ²
Conductor Cross Section Stranded max.	2.5 mm ²
Conductor Cross Section AWG/Kcmil min	22 mm ²
Conductor Cross Section AWG/Kcmil max	14 mm ²
Conductor Cross Section Stranded with Ferrule/Lug min	0.2 mm ²
Conductor Cross Section Stranded with Ferrule/Lug max	2.5 mm ²
2 Conductors with same Cross Section Stranded min	0.2 mm ²
2 Conductor with same Cross Section Stranded max	1.5 mm ²
Conductor Cross Section Solid min	0.2 mm ²
Conductor Cross Section Solid max	2.5 mm ²
Stripping Length	11 mm
Internal Cylindrical Guage	A3

DIMENSIONS

Height	27.3 mm
Length	35 mm
Width (Thickness)	10 mm

ORDERING INFORMATION

CAT. NO.	DESCRIPTION	STD. PACK
CSCP2.5T2	2.5 sq.mm Panel Mount Spring Clamp Terminal Block in Grey colour	100
CSCP2.5T2R	2.5 sq.mm Panel Mount Spring Clamp Terminal Block in Red colour	100
CSCP2.5T2Y	2.5 sq.mm Panel Mount Spring Clamp Terminal Block in Yellow colour	100
CSCP2.5T2BU	2.5 sq.mm Panel Mount Spring Clamp Terminal Block in Blue colour	100

ORDERING INFORMATION

CAT. NO.	DESCRIPTION	STD. PACK
CSCP2.5T2GN	2.5 sq.mm Panel Mount Spring Clamp Terminal Block in Green colour	100
CSCP2.5T2BK	2.5 sq.mm Panel Mount Spring Clamp Terminal Block in Black colour	100

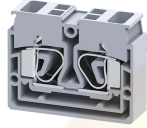
ACCESSORIES

IMAGES	CAT. NO.	DESCRIPTION	STD. PACK
	EPCSCP2.5T	End Plate in Grey Colour	50
	EPCSCPL	End Plate in Grey Colour	50
	EPCSCPR	End Plate in Grey Colour	50
	CA803/1	External Comb Type Shorting Link	100
	CA509/K3	Blank Marking Tag	100
	SCA2.5	Actuator for actuating the Spring Clamp	1

APPROVALS



CSCP2.5T2



connectwell
THE RIGHT CONNECTION

RATINGS AS PER STANDARDS

STANDARDS	UL 1059	CSA C.22.2 No:158	DIN EN60947-7-1
Approvals	UL	CSA	VDE
Conductor Cross Section Stranded min.	22 AWG	22 AWG	0.5 mm ²
Conductor Cross Section Stranded max.	14 AWG	14 AWG	2.5 mm ²
Rated Voltage	600 V	600 V	800 V
Rated Current	20 A	20 A	24 A

STANDARDS	IEC/EN60947-7-1	EN60079-7	EN60079-7
Approvals	CE	ATEX	ATEX-IECex
Conductor Cross Section Stranded min.	0.2 mm ²	0.5 mm ²	0.5 mm ²
Conductor Cross Section Stranded max.	2.5 mm ²	2.5 mm ²	2.5 mm ²
Rated Voltage	800 V	500 V	500 V
Rated Current	24 A	21 A	21 A
Operating Temperature Range		-40 to +85 °C	

Website : rujutaent.com
Email : rujutaent@gmail.com
9082463426 , 8169580098
9820825440 , 9769789105