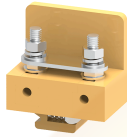


# CSTSRN5



M5 sized Stud Type Terminal Blocks, suitable for operation with nut driver.

These Terminal Blocks are preferred for applications where the connections are subjected to severe vibrations.

The wire is crimped to ring /fork type Lug (Ferrule) and is screwed on to flat current bar on the Terminal Block .The range includes Terminal Blocks for wire sizes from 1.5 to 16 sq mm.

Cross connection can be achieved with the aid of external shorting links.

It is recommended to use Protective Covers in transparent plastic to fully shroud these assemblies.

### TECHNICAL DATA

Rated Voltage	1000 V
Rated Current	76 A
Tightening Torque	2 Nm
Housing Material	Melamine
Product Function	Feed Through
Wire Entry Orientation	Side Entry
Mounting Possibility	DIN 32 Rail
Stud Size	M5
Operated by	Nut Driver
Rated Surge Voltage	8 KV
Pollution Degree	3

### CONNECTION DATA

Conductor Cross Section Stranded min.	1.5 mm <sup>2</sup>
Conductor Cross Section Stranded max.	16 mm <sup>2</sup>
Conductor Cross Section AWG/Kcmil min	22 AWG
Conductor Cross Section AWG/Kcmil max	4 AWG
Conductor Cross Section Stranded with Ferrule/Lug min	1.5 mm <sup>2</sup>
Conductor Cross Section Stranded with Ferrule/Lug max	16 mm <sup>2</sup>
2 Conductors with same Cross Section Stranded min	1.5 mm <sup>2</sup>
2 Conductor with same Cross Section Stranded max	16 mm <sup>2</sup>
Conductor Cross Section Solid min	1.5 mm <sup>2</sup>
Stripping Length	16 mm

### DIMENSIONS

Height with DIN 32 rail	53.5 mm
Length	43 mm
Width (Thickness)	26 mm

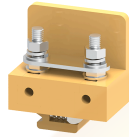
### ORDERING INFORMATION

CAT. NO.	DESCRIPTION	STD. PACK
CSTSRN5	16 sq.mm 26 mm Pitch Stud Type Terminal Block in Khaki/Beige colour	50
CSTSRN5R	16 sq.mm 26 mm Pitch Stud Type Terminal Block in Red colour	50
CSTSRN5Y	16 sq.mm 26 mm Pitch Stud Type Terminal Block in Yellow colour	50
CSTSRN5BU	16 sq.mm 26 mm Pitch Stud Type Terminal Block in Blue colour	50
CSTSRN5BK	16 sq.mm 26mm Pitch Stud Type Terminal Block in Black colour	50

### ACCESSORIES

IMAGES	CAT. NO.	DESCRIPTION	STD. PACK
	CA501-1M	Din 32 Rail unslotted 1 meter	50
	CA501-1M-S	Din 32 Rail slotted 1 meter	50
	CA501-2M	Din 32 Rail unslotted 2 meter	50
	CA501-2M-S	Din 32 Rail slotted 2 meter	50
	CA502	End Clamp in Steel suitable for Din 32 Rail	50
	CA702	End Clamp in Polyamide 66 suitable for Din 32 / Din 35 / Din 35-15 Rails	50
	CSTSREP	End Plate in Khaki / Beige colour	50
	CA514/11-2	Insulated Removable Shorting Link available in 2 Pole	50
	CA514/12-2	Insulated Removable Shorting Link available in 2 Pole	50
	CA512/11-2	Removable Shorting Link available in 2 Pole	50

CSTSRN5



**connectwell**  
THE RIGHT CONNECTION

**ACCESSORIES**

IMAGES	CAT. NO.	DESCRIPTION	STD. PACK
	CA512/12-2	Insulated Removable Shorting Link available in 2 Pole	50
	CA509/K6	Blank Marking Tag	100
	MACK-RN5	Marker Mounting Carrier suitable for CSTSRN5 and CSTSRN6	100
	CTSPC(90 mm)	Protective Cover is available in 90 mm Length	10
	CTSPC(100 mm)	Protective Cover is available in 100 mm Length	10
	CTSPC(150 mm)	Protective Cover is available in 150 mm Length	10
	CTSPC(200 mm)	Protective Cover is available in 200 mm Length	10
	CTSPC(300 mm)	Protective Cover is available in 300 mm Length	10
	CTSPC(760 mm)	Protective Cover is available in 760 mm Length	10
	CSP1	Support Plate for Protective Covers	50

**APPROVALS**



**RATINGS AS PER STANDARDS**

STANDARDS	CSA C.22.2 No:158	IEC/EN60947-7-1
Approvals	CSA	CE
Conductor Cross Section Stranded min.	22 AWG	1.5 mm <sup>2</sup>
Conductor Cross Section Stranded max.	4 AWG	16 mm <sup>2</sup>
Rated Voltage	600 V	1000 V
Rated Current	85 A	76 A
Tightening Torque	25 lb-in	2 Nm

Website : [rujutaent.com](http://rujutaent.com)  
 Email : [rujutaent@gmail.com](mailto:rujutaent@gmail.com)  
 9082463426 , 8169580098  
 9820825440 , 9769789105