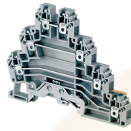


CTLG2.5



Three Level + Ground Feed through Terminal block

The CTLG2.5 is a triple level Terminal Block with an additional connection for earthing cables. This separate connection point is appropriately identified by the green - yellow imprint on its top. This Terminal Block is an ideal choice for motor, sensor, actuator and initiator connections.

TECHNICAL DATA

| | |
|------------------------|-----------------------|
| Rated Voltage | 440 V |
| Rated Current | 24 A |
| Tightening Torque | 0.4 Nm |
| Housing Material | Polymide |
| Product Function | Triple Level |
| Wire Entry Orientation | Side Entry |
| Mounting Possibility | DIN 35/DIN 35-15 Rail |
| Screw Size | M2.5 |
| Operated by | Screwdriver |
| Rated Surge Voltage | 6 KV |
| Pollution Degree | 3 |

CONNECTION DATA

| | |
|-------------------------------------------------------------------------|---------------------|
| Conductor Cross Section Stranded min. | 0.2 mm ² |
| Conductor Cross Section Stranded max. | 2.5 mm ² |
| Conductor Cross Section AWG/Kcmil min | 24 AWG |
| Conductor Cross Section AWG/Kcmil max | 12 AWG |
| Conductor Cross Section Stranded with Ferrule/Lug min | 0.2 mm ² |
| Conductor Cross Section Stranded with Ferrule/Lug max | 2.5 mm ² |
| 2 Conductors with same Cross Section Stranded min | 2.5 mm ² |
| 2 Conductor with same Cross Section Stranded max | 1.5 mm ² |
| Conductor Cross Section Solid min | 0.2 mm ² |
| Conductor Cross Section Solid max | 4 mm ² |
| 2 Conductors with same Cross Section Stranded with TWIN Ferrule/Lug min | 0.2 mm ² |
| 2 Conductor with same Cross Section Stranded with TWIN Ferrule/Lug max | 1.5 mm ² |
| Stripping Length | 9 mm |
| Internal Cylindrical Gauge | A3 |

DIMENSIONS

| | |
|----------------------------------|---------|
| Height with DIN 35 x 15 mm rail | 74 mm |
| Height with DIN 35 x 7.5 mm rail | 66 mm |
| Length | 87.5 mm |
| Width (Thickness) | 6 mm |

ORDERING INFORMATION

| CAT. NO. | DESCRIPTION | STD. PACK |
|----------|---------------------------------------------|-----------|
| CTLG2.5 | 2.5 sq.mm Triple Level with ground Terminal | 100 |

ORDERING INFORMATION

| CAT. NO. | DESCRIPTION | STD. PACK |
|----------|----------------------|-----------|
| | Block in Grey colour | |

ACCESSORIES

| IMAGES | CAT. NO. | DESCRIPTION | STD. PACK |
|--------|------------|-------------------------------|-----------|
| | CA701-1M | Din 35 Rail unslotted 1 meter | 50 |
| | CA701-2M | Din 35 Rail unslotted 2 meter | 50 |
| | CA701-2M-S | Din 35 Rail slotted 2 meter | 50 |
| | CA701-1M-S | Din 35 Rail slotted 1 meter | 50 |

| | | | |
|--|---------------|---------------------------------------|----|
| | CA701-15-1M | Din 35 Rail 15 deep unslotted 1 meter | 50 |
| | CA701-15-1M-S | Din 35 Rail 15 deep slotted 1 meter | 50 |
| | CA701-15-2M | Din 35 Rail 15 deep unslotted 2 meter | 50 |
| | CA701-15-2M-S | Din 35 Rail 15 deep slotted 2 meter | 50 |

| | | | |
|--|-------|--------------------------------------------------------------|----|
| | CA202 | End Clamp in Polyamide suitable for Din 35 / Din 35-15 Rails | 25 |
|--|-------|--------------------------------------------------------------|----|

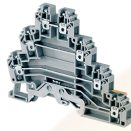
| | | | |
|--|-------|--------------------------------------------------------------------------|----|
| | CA702 | End Clamp in Polyamide 66 suitable for Din 32 / Din 35 / Din 35-15 Rails | 50 |
|--|-------|--------------------------------------------------------------------------|----|

| | | | |
|--|-------|--------------------------------------------------------------|----|
| | CA802 | End Clamp in Polyamide suitable for Din 35 / Din 35-15 Rails | 50 |
|--|-------|--------------------------------------------------------------|----|

| | | | |
|--|-----------|-------------------------------------------------------------------------------|----|
| | EPCTLG2.5 | End Plate in Grey colour suitable for CTLG2.5 / CTLG2.5(E)MOV Terminal Blocks | 50 |
|--|-----------|-------------------------------------------------------------------------------|----|

| | | | |
|--|----------|-------------------------------------------------------------|-----|
| | CA627/2 | Preassembled Internal Shorting Link Assemblies with 2 poles | 100 |
| | CA627/3 | Preassembled Internal Shorting Link Assemblies with 3 poles | 100 |
| | CA627/4 | Preassembled Internal Shorting Link Assemblies with 4 poles | 100 |
| | CA627/10 | Preassembled Internal Shorting Link Assemblies with 4 poles | 10 |

CTLG2.5



connectwell
THE RIGHT CONNECTION

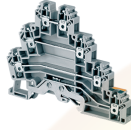
ACCESSORIES

| IMAGES | CAT. NO. | DESCRIPTION | STD. PACK |
|--------|-------------|-------------------------------------------------------------------------------------------------------------------------------------------------------------------|-----------|
| | CA647/2 | Insulated Pre assembled Shorting Link for 2 way shorting suitable for CDLG2.5 / CTLG2.5 Terminal Blocks. | 100 |
| | CA647/3 | Insulated Pre assembled Shorting Link for 3 way shorting suitable for CDLG2.5 / CTLG2.5 Terminal Blocks. | 100 |
| | CA647/4 | Insulated Pre assembled Shorting Link for 4 way shorting suitable for CDLG2.5 / CTLG2.5 Terminal Blocks. | 100 |
| | CA647/10 | Insulated Pre assembled Shorting Link for 10 way shorting suitable for CDLG2.5 / CTLG2.5 Terminal Blocks. | 10 |
| | CA715/2 | External Comb Type Shorting Link available in 2 Pole | 100 |
| | CA715/3 | External Comb Type Shorting Link available in 3 Pole | 100 |
| | CA715/4 | External Comb Type Shorting Link available in 4 Pole | 100 |
| | CA715/10 | External Comb Type Shorting Link available in 10 Pole | 20 |
| | CA703/1 | Permanent Shorting Link for 2 way shorting | 100 |
| | CA704/1 | Permanent Shorting Link for 3 way shorting | 100 |
| | CA705/1 | Permanent Shorting Link for 4 way shorting | 100 |
| | CA732/10 | Permanent Shorting Link for 10 way shorting | 100 |
| | CA732/10-A | Permanent Shorting Link (Breakable) for 10 way shorting | 100 |
| | CA732/100 | Permanent Shorting Link for 100 way shorting | 100 |
| | CA611/S/Q | Shorting Sleeve and Screw | 100 |
| | CA509/K2G | Marking Tag Blank suitable for CDLG2.5 / CTLG2.5 / CTLG2.5(E)MOV / ADLG2.5 / ATL2.5 / ATL2.5H / ATLG2.5 Terminal Blocks | 100 |
| | CA509/K2G/H | Marking Tag with Horizontal printing suitable for CDLG2.5 / CTLG2.5 / CTLG2.5(E)MOV Terminal Blocks | 100 |
| | CA509/K2G/V | Marking Tag with Vertical printing suitable for CDLG2.5 / CTLG2.5 / CTLG2.5(E)MOV Terminal Blocks | 100 |
| | CA707/TS/01 | Test Socket Suitable for CTS2.5UN / CTS2.5UE / CTS4UN / CTC4U / CMB4 / CTLG2.5 / CTL2.5U / CTL2.5UH / ODL4U / ODL4UA / CDLG2.5 / CMC1-2 / CMC2-2 Terminal Blocks. | 100 |
| | SCS0.5/3 | Electricians Screwdriver for slotted screws | 10 |

APPROVALS



CTLG2.5



connectwell
THE RIGHT CONNECTION

RATINGS AS PER STANDARDS

| STANDARDS | UL 1059 |
|---------------------------------------|----------------|
| Approvals | UL |
| Conductor Cross Section Stranded min. | 24 AWG |
| Conductor Cross Section Stranded max. | 12 AWG |
| Rated Voltage | 300 V |
| Rated Current | 24 A |
| Tightening Torque | 4.5 lb-in |

Website : rujutaent.com
Email : rujutaent@gmail.com
9082463426 , 8169580098
9820825440 , 9769789105