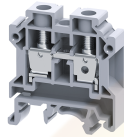


# CTS10U



## 10 sq. mm Standard Feed Through Terminal Blocks

10 sq.mm Feed Through Terminal Blocks are the most Versatile terminals for control, Automation, Instrumentation and Power Distribution applications. A specially designed flexible foot enable easy mounting and dismounting from the Din rail with the help of screw driver. These Terminal Blocks have marker holding recesses to accept marking tags for circuit identification. Cross connection can be achieved with the aid of shorting links / sleeves & screws.

### TECHNICAL DATA

Rated Voltage	1000 V
Rated Current	57 A
Tightening Torque	1.2 Nm
Housing Material	Polymide
Product Function	Feed Through
Wire Entry Orientation	Side Entry
Mounting Possibility	DIN 32/DIN 35/DIN 35-15 Rail
Screw Size	M4
Operated by	Screwdriver
Rated Surge Voltage	8 KV
Pollution Degree	3

### CONNECTION DATA

Conductor Cross Section Stranded min.	0.5 mm <sup>2</sup>
Conductor Cross Section Stranded max.	10 mm <sup>2</sup>
Conductor Cross Section AWG/Kcmil min	16 AWG
Conductor Cross Section AWG/Kcmil max	6 AWG
Conductor Cross Section Stranded with Ferrule/Lug min	0.5 mm <sup>2</sup>
Conductor Cross Section Stranded with Ferrule/Lug max	10 mm <sup>2</sup>
2 Conductors with same Cross Section Stranded min	0.5 mm <sup>2</sup>
2 Conductor with same Cross Section Stranded max	6 mm <sup>2</sup>
Conductor Cross Section Solid min	0.5 mm <sup>2</sup>
Conductor Cross Section Solid max	16 mm <sup>2</sup>
2 Conductors with same Cross Section Stranded with TWIN Ferrule/Lug min	0.5 mm <sup>2</sup>
2 Conductor with same Cross Section Stranded with TWIN Ferrule/Lug max	6 mm <sup>2</sup>
Stripping Length	12 mm
Internal Cylindrical Guage	A6

### DIMENSIONS

Height with DIN 32 rail	52.8 mm
Height with DIN 35 x 15 mm rail	55.5 mm
Height with DIN 35 x 7.5 mm rail	47.8 mm
Length	43 mm
Width (Thickness)	10 mm

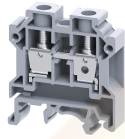
### ORDERING INFORMATION

CAT. NO.	DESCRIPTION	STD. PACK
CTS10U	10 sq.mm Feed Through Terminal Block in Grey colour	100
CTS10UR	10 sq.mm Feed Through Terminal Block in Red colour	100
CTS10UY	10 sq.mm Feed Through Terminal Block in Yellow colour	100
CTS10UBU	10 sq.mm Feed Through Terminal Block in Blue colour	100
CTS10UGN	10 sq.mm Feed Through Terminal Block in Green colour	100
CTS10UBK	10 sq.mm Feed Through Terminal Block in Black colour	100
CTS10UO	10 sq.mm Feed Through Terminal Block in Orange colour	100
CTS10UW	10 sq.mm Feed Through Terminal Block in White colour	100
CTS10UBG	10 sq.mm Feed Through Terminal Block in Beige colour	100

### ACCESSORIES

IMAGES	CAT. NO.	DESCRIPTION	STD. PACK
	CA501-1M	Din 32 Rail unslotted 1 meter	50
	CA501-1M-S	Din 32 Rail slotted 1 meter	50
	CA501-2M	Din 32 Rail unslotted 2 meter	50
	CA501-2M-S	Din 32 Rail slotted 2 meter	50
	CA701-1M	Din 35 Rail unslotted 1 meter	50
	CA701-2M	Din 35 Rail unslotted 2 meter	50
	CA701-2M-S	Din 35 Rail slotted 2 meter	50
	CA701-1M-S	Din 35 Rail slotted 1 meter	50
	CA701-15-1M	Din 35 Rail 15 deep unslotted 1 meter	50
	CA701-15-1M-S	Din 35 Rail 15 deep slotted 1 meter	50
	CA701-15-2M	Din 35 Rail 15 deep unslotted 2 meter	50
	CA701-15-2M-S	Din 35 Rail 15 deep slotted 2 meter	50
	CA702	End Clamp in Polyamide 66 suitable for Din 32 / Din 35 / Din 35-15 Rails	50
	CA802	End Clamp in Polyamide suitable for Din 35 / Din 35-15 Rails	50

CTS10U



**connectwell**  
THE RIGHT CONNECTION

ACCESSORIES

IMAGES	CAT. NO.	DESCRIPTION	STD. PACK
	EP6/10U	End Plate in Grey colour	50
	EP6/10UBU	End Plate in Blue colour	50
	EP6/10UY	End Plate in Yellow colour	50
	PP6/10U	Partition Plate in Grey colour suitable for CTS6U / CTS10U Terminal Block	50
	SP6/10U	Separator Plate in Grey colour	100
	CA724/2	Pre Assembled Shorting Link assemblies with 2 poles	100
	CA724/3	Pre Assembled Shorting Links assemblies with 3 poles	50
	CA724/4	Pre assembled Shorting Link assemblies with 4 poles	50
	CA724/10	Pre Assembled Shorting Links assemblies with 10 poles	100
	CA724/9	Pre Assembled Shorting Links assemblies with 9 poles	100
	CA744/2	Insulated Pre assembled Shorting Link for 2 way shorting	100
	CA744/3	Insulated Pre assembled Shorting Link for 3 way shorting	50
	CA744/4	Insulated Pre assembled Shorting Link for 4 way shorting	50
	CA744/10	Insulated Pre assembled Shorting Link for 10 way shorting	10
	CA718/2	External Comb Type Shorting Link available in 2 Pole	100
	CA718/3	External Comb Type Shorting Link available in 3 Pole	50
	CA718/4	External Comb Type Shorting Link available in 4 Pole	50
	CA718/10	External Comb Type Shorting Link available in 10 Pole	20
	CA703/3	Permanent Shorting Link for 2 way shorting	100
	CA704/3	Permanent Shorting Link for 3 way shorting	100
	CA705/3	Permanent Shorting Link for 4 way shorting	100
	CA734/10	Permanent Shorting Link for 10 way shorting	100
	CA707/S/Q/1	Shorting Sleeve and Screw	100
	CA706/3	Removable Shorting link suitable for CTS10U	100
	CA707/L/Q/1	Long Sleeves & Screws	100

ACCESSORIES

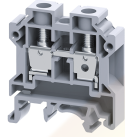
IMAGES	CAT. NO.	DESCRIPTION	STD. PACK
	CA509/K10	Marking Tag Blank suitable for CTS10U / CGT10U / CGT10N / CHV10U / CTS10USC / STH4 / STH4DT / STH4DTSH / CSC10T Terminal Blocks	100
	CA707/TS/05	Test Socket suitable for CTS6U / CTS10U Terminal Blocks	100
	SCS0.8/4	Electricians Screwdriver for slotted screws	10

APPROVALS



Website : [rujutaent.com](http://rujutaent.com)  
 Email : [rujutaent@gmail.com](mailto:rujutaent@gmail.com)  
 9082463426, 8169580098  
 9820825440, 9769789105

CTS10U



**connectwell**  
THE RIGHT CONNECTION

**RATINGS AS PER STANDARDS**

STANDARDS	UL 1059	CSA C.22.2 No:158	DIN EN60947-7-1
Approvals	UL	CSA	VDE
Conductor Cross Section Stranded min.	16 AWG	16 AWG	1.5 mm <sup>2</sup>
Conductor Cross Section Stranded max.	6 AWG	6 AWG	10 mm <sup>2</sup>
Rated Voltage	600 V	600 V	800 V
Rated Current	65 A	65 A	57 A
Tightening Torque	14 lb-in	14 lb-in	1.2 Nm
STANDARDS	IEC/EN60947-7-1	EN60079-7	IEC 60079-0 & IEC 60079-7
Approvals	CE	ATEX	AEx
Conductor Cross Section Stranded min.	0.5 mm <sup>2</sup>	1.5 mm <sup>2</sup>	1.5 mm <sup>2</sup>
Conductor Cross Section Stranded max.	10 mm <sup>2</sup>	10 mm <sup>2</sup>	10 mm <sup>2</sup>
Rated Voltage	1000 V	690 V	690 V
Rated Current	57 A	50 A	50 A
Tightening Torque	1.2 Nm	1.2 Nm	1.2 Nm
Operating Temperature Range		-40 to +85 °C	
STANDARDS	EN60079-7		
Approvals	ATEX-IECex		
Conductor Cross Section Stranded min.	1.5 mm <sup>2</sup>		
Conductor Cross Section Stranded max.	10 mm <sup>2</sup>		
Rated Voltage	690 V		
Rated Current	50 A		
Tightening Torque	1.2 Nm		

Website : [rujutaent.com](http://rujutaent.com)  
 Email : [rujutaent@gmail.com](mailto:rujutaent@gmail.com)  
 9082463426 , 8169580098  
 9820825440 , 9769789105