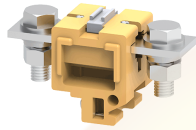


CTS95L



connectwell
THE RIGHT CONNECTION

95 sq.mm Bus Bar Type Terminal Blocks with locking nut.

These Terminal Blocks are preferred for applications using wires of a large cross section. The wire is crimped to a ring / fork type lug (ferrule) and is screwed on to the flat current bar on the Terminal Block. Partition / Isolation Plate must be used with every Terminal Block. The Protective Cover is designed to be mounted on a specially designed slot in the Partition Plate.

TECHNICAL DATA

Rated Voltage	1000 V
Rated Current	232 A
Tightening Torque	10 Nm
Housing Material	Melamine
Product Function	Feed Through
Wire Entry Orientation	Side Entry
Mounting Possibility	DIN 32 Rail
Screw Size	M10
Operated by	Nut Driver
Rated Surge Voltage	8 KV
Pollution Degree	3

CONNECTION DATA

Conductor Cross Section Stranded min.	35 mm ²
Conductor Cross Section Stranded max.	95 mm ²
Conductor Cross Section AWG/Kcmil min	8 AWG
Conductor Cross Section AWG/Kcmil max	4/0 AWG
Conductor Cross Section Stranded with Ferrule/Lug min	35 mm ²
Conductor Cross Section Stranded with Ferrule/Lug max	95 mm ²
Stripping Length	20 mm

DIMENSIONS

Height with DIN 32 rail	52 mm
Length	92 mm
Width (Thickness)	40 mm

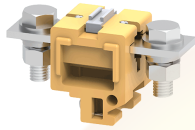
ORDERING INFORMATION

CAT. NO.	DESCRIPTION	STD. PACK
CTS95L	95 sq.mm Bus Bar Type Terminal Block in Khaki/Beige colour	10
CTS95LR	95 sq.mm Bus Bar Type Terminal Block in Red colour	10
CTS95LY	95 sq.mm Bus Bar Type Terminal Block in Yellow colour	10
CTS95LBU	95 sq.mm Bus Bar Type Terminal Block in Blue colour	10
CTS95LBK	95 sq.mm Bus Bar Type Terminal Block in Black colour	10

ACCESSORIES

IMAGES	CAT. NO.	DESCRIPTION	STD. PACK
	CA501-1M	Din 32 Rail unslotted 1 meter	50
	CA501-1M-S	Din 32 Rail slotted 1 meter	50
	CA501-2M	Din 32 Rail unslotted 2 meter	50
	CA501-2M-S	Din 32 Rail slotted 2 meter	50
	CA102	End Clamp in Polyamide suitable for Din32 / Din35 / Din35-15 Rails	50
	CA502	End Clamp in Steel suitable for Din 32 Rail	50
	CA702	End Clamp in Polyamide 66 suitable for Din 32 / Din 35 / Din 35-15 Rails	50
	EP4P	Partition Plate in Polyamide 6.6 Grey colour	50
	CA798/2	Permanent Shorting Link for 2 way shorting	10
	CA798/3	Permanent Shorting Link for 3 way shorting	10
	CA509/K2B4	Blank Marking Tag	100
	CTSPC3-1	90 mm Protective Cover	10
	CTSPC3-2	210 mm Protective Cover	10
	CTSPC2-1	100 mm Protective Cover	10
	CTSPC2-2	190 mm Protective Cover	10

CTS95L



connectwell
THE RIGHT CONNECTION

RATINGS AS PER STANDARDS

STANDARDS	CSA C.22.2 No:158	IEC/EN60947-7-1
Approvals	CSA	CE
Conductor Cross Section Stranded min.	8 AWG	35 mm ²
Conductor Cross Section Stranded max.	4/0 AWG	95 mm ²
Rated Voltage	600 V	1000 V
Rated Current	300 A	232 A
Tightening Torque	87 lb-in	10 Nm

Website : rujutaent.com
Email : rujutaent@gmail.com
9082463426 , 8169580098
9820825440 , 9769789105