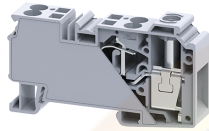


CXDB35/10



Modular Distribution Blocks with 10 sq.mm Output connections and 35 sq.mm Input Connection

The CXDB range of distribution blocks is an ideal choice for a simplified distribution system. A screw clamp of the block provides a connection point for the incoming cable. All the terminals are internally connected and provide multiple connection points for the outgoing wires. A Protective shield effectively shrouds the incoming connection.

TECHNICAL DATA

Rated Voltage	1000 V
Rated Current - Input Side	125 A
Rated Current - Output Side	41 A
Tightening Torque - Input Side	2.5 Nm
Housing Material	Polymide
Product Function	Compact Distribution Block
Wire Entry Orientation	Top
Mounting Possibility	DIN 35/DIN 35-15 Rail
Operated by	Screw Driver
Rated Surge Voltage	8 KV
Pollution Degree	3

CONNECTION DATA

Conductor Cross Section Stranded min.	1.5 mm ²
Conductor Cross Section Stranded max.	35 mm ²
Conductor Cross Section Stranded min.- Input Side	1.5 mm ²
Conductor Cross Section Stranded max. - Input Side	35 mm ²
Conductor Cross Section Stranded min.- Output Side	0.2 mm ²
Conductor Cross Section Stranded max.- Output Side	10 mm ²
Conductor Cross Section AWG/Kcmil min	14 AWG
Conductor Cross Section AWG/Kcmil max	2 AWG
Stripping Length- Input Side	17 mm
Stripping Length-Output Side	15 mm

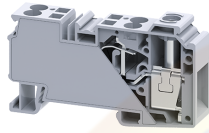
DIMENSIONS

Height with DIN 35 x 15 mm rail	54.3 mm
Height with DIN 35 x 7.5 mm rail	46.8 mm
Length	81.6 mm
Width (Thickness)	16 mm

ORDERING INFORMATION

CAT. NO.	DESCRIPTION	STD. PACK
CXDB35/10	Modular Distribution Blocks with 10 sq.mm Output connections and 35 sq.mm Input Connection	20

CXDB35/10



connectwell
THE RIGHT CONNECTION

APPROVALS



RATINGS AS PER STANDARDS

STANDARDS	UL 1059	IEC 60947-7-1
Approvals	UL	CE
Conductor Cross Section Stranded min.- Input Side	14 AWG	1.5 mm ²
Conductor Cross Section Stranded max. - Input Side	2 AWG	35 mm ²
Conductor Cross Section Stranded min.- Output Side	24 AWG	0.2 mm ²
Conductor Cross Section Stranded max.- Output Side	8 AWG	10 mm ²
Rated Voltage	600 V	1000 V
Rated Current - Input Side	115 A	125 A
Rated Current - Output Side	41 A	41 A
Tightening Torque - Input Side	25 lb-in	2.5 Nm

Website : rujutaent.com
Email : rujutaent@gmail.com
9082463426 , 8169580098
9820825440 , 9769789105