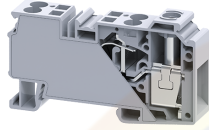


CXDB35/10A



connectwell
THE RIGHT CONNECTION

Modular Distribution Blocks with 10 sq.mm Output connections and 35 sq.mm Input Connection with Allan screw

The CXDB range of distribution blocks is an ideal choice for a simplified distribution system. A screw clamp of the block provides a connection point for the incoming cable. All the terminals are internally connected and provide multiple connection points for the outgoing wires. A Protective shield effectively shrouds the incoming connection.

TECHNICAL DATA

Rated Voltage	1000 V
Rated Current - Input Side	125 A
Rated Current - Output Side	41 A
Tightening Torque - Input Side	2.5 Nm
Housing Material	Polymide
Product Function	Compact Distribution Block
Wire Entry Orientation	Top
Mounting Possibility	DIN 35/DIN 35-15 Rail
Operated by	Screw Driver
Rated Surge Voltage	8 KV
Pollution Degree	3

CONNECTION DATA

Conductor Cross Section Stranded min.	1.5 mm ²
Conductor Cross Section Stranded max.	35 mm ²
Conductor Cross Section Stranded min.- Input Side	1.5 mm ²
Conductor Cross Section Stranded max. - Input Side	35 mm ²
Conductor Cross Section Stranded min.- Output Side	0.2 mm ²
Conductor Cross Section Stranded max.- Output Side	10 mm ²
Conductor Cross Section AWG/Kcmil min	14 AWG
Conductor Cross Section AWG/Kcmil max	2 AWG
Stripping Length- Input Side	17 mm
Stripping Length-Output Side	15 mm

DIMENSIONS

Height with DIN 35 x 15 mm rail	54.3 mm
Height with DIN 35 x 7.5 mm rail	46.8 mm
Length	81.6 mm
Width (Thickness)	16 mm

ORDERING INFORMATION

CAT. NO.	DESCRIPTION	STD. PACK
CXDB35/10A	Modular Distribution Blocks with 10 sq.mm Output connections and 35 sq.mm Input Connection with allan screw	20

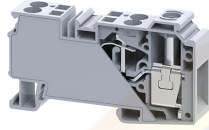
ACCESSORIES

IMAGES	CAT. NO.	DESCRIPTION	STD. PACK
	CA701-1M	Din 35 Rail unslotted 1 meter	50
	CA701-2M	Din 35 Rail unslotted 2 meter	50
	CA701-2M-S	Din 35 Rail slotted 2 meter	50
	CA701-1M-S	Din 35 Rail slotted 1 meter	50
	CA701-15-1M	Din 35 Rail 15 deep unslotted 1 meter	50
	CA701-15-1M-S	Din 35 Rail 15 deep slotted 1 meter	50
	CA701-15-2M	Din 35 Rail 15 deep unslotted 2 meter	50
	CA701-15-2M-S	Din 35 Rail 15 deep slotted 2 meter	50
	CA702	End Clamp in Polyamide 66 suitable for Din 32 / Din 35 / Din 35-15 Rails	50
	CA802	End Clamp in Polyamide suitable for Din 35 / Din 35-15 Rails	50
	CA202	End Clamp in Polyamide suitable for Din 35 / Din 35-15 Rails	25
	CA509/K16	Marking Tag Blank suitable for CTS35UNA / CGT35U Terminal Blocks	100
	SCS1/5.5	Electricians Screwdriver for slotted screws	10
	SCS0.8/4	Electricians Screwdriver for slotted screws	10
	JX6/2	Shorting Link for 8 mm wide TB	100
	JX6/3	Shorting Link for 8 mm wide TB	50
	JX6/4	Shorting Link for 8 mm wide TB	50
	JX6/10	Shorting Link for 8 mm wide TB	10

APPROVALS



CXDB35/10A



connectwell
THE RIGHT CONNECTION

RATINGS AS PER STANDARDS

STANDARDS	UL 1059	IEC 60947-7-1
Approvals	UL	CE
Conductor Cross Section Stranded min.- Input Side	14 AWG	1.5 mm ²
Conductor Cross Section Stranded max. - Input Side	2 AWG	35 mm ²
Conductor Cross Section Stranded min.- Output Side	24 AWG	0.2 mm ²
Conductor Cross Section Stranded max.- Output Side	8 AWG	10 mm ²
Rated Voltage	600 V	1000 V
Rated Current - Input Side	115 A	125 A
Rated Current - Output Side	41 A	41 A
Tightening Torque - Input Side	25 lb-in	2.5 Nm

Website : rujutaent.com
Email : rujutaent@gmail.com
9082463426 , 8169580098
9820825440 , 9769789105