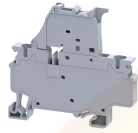


# CXF4L



## 4 sq.mm Spring Clamp Fuse compact Terminal Blocks

The Spring Clamp is operated by using a screw driver to provide an access to the wire through an opening in the spring clamp. The inserted wire gets clamped on to the current bar when the screw driver is removed.

### TECHNICAL DATA

Rated Voltage	1000 V
Rated Current	10 A
Housing Material	Polymide
Product Function	Single Level Fuse with Indication
Wire Entry Orientation	Top
Mounting Possibility	DIN 35/DIN 35-15 Rail
Operated by	Screw Driver
Rated Surge Voltage	8 KV
Pollution Degree	3

### CONNECTION DATA

Conductor Cross Section Stranded min.	0.2 mm <sup>2</sup>
Conductor Cross Section Stranded max.	4 mm <sup>2</sup>
Conductor Cross Section AWG/Kcmil min	24 AWG
Conductor Cross Section AWG/Kcmil max	10 AWG
Conductor Cross Section Stranded with Ferrule/Lug min	0.2 mm <sup>2</sup>
Conductor Cross Section Stranded with Ferrule/Lug max	4 mm <sup>2</sup>
2 Conductors with same Cross Section Stranded min	0.2 mm <sup>2</sup>
2 Conductor with same Cross Section Stranded max	1 mm <sup>2</sup>
Conductor Cross Section Solid min	0.2 mm <sup>2</sup>
Conductor Cross Section Solid max	6 mm <sup>2</sup>
2 Conductors with same Cross Section Stranded with TWIN Ferrule/Lug min	0.2 mm <sup>2</sup>
2 Conductor with same Cross Section Stranded with TWIN Ferrule/Lug max	1 mm <sup>2</sup>
Stripping Length	10 mm

### DIMENSIONS

Height with DIN 35 x 15 mm rail	69 mm
Height with DIN 35 x 7.5 mm rail	61.5 mm
Length	65.4 mm
Width (Thickness)	6 mm

### FUSE SPECIFICATIONS

Fuse Type	Glass type fuse
Fuse Size	5 X 20 mm
Fuse Current Rating	6.3 A

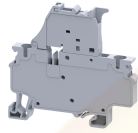
### ORDERING INFORMATION

CAT. NO.	DESCRIPTION	STD. PACK
CXF4L	4mm <sup>2</sup> Ø5X20mm SPRING CL FUSE TB	50
CXF4L6-60V	4mm <sup>2</sup> Ø5X20mm SPRING CLMP FUSE TB 6-60V	50
CXF4L6-60VBU	4mm <sup>2</sup> Ø5X20mm SPRING CLMP FUSE TB 6-60V Blue	50
CXF4L110-240V	4mm <sup>2</sup> Ø5X20mm SPRING CL FUSE TB110-240V	50
CXF4L110-240VR	4mm <sup>2</sup> Ø5X20mm SPRING CL FUSE TB110-240V Red	50
CXF4L110-240VY	4mm <sup>2</sup> Ø5X20mm SPRING CL FUSE TB110-240V Yellow	50
CXF4L110-240VBU	4mm <sup>2</sup> Ø5X20mm SPRING CL FUSE TB110-240V Blue	50

### ACCESSORIES

IMAGES	CAT. NO.	DESCRIPTION	STD. PACK
	CA701-1M	Din 35 Rail unslotted 1 meter	50
	CA701-2M	Din 35 Rail unslotted 2 meter	50
	CA701-2M-S	Din 35 Rail slotted 2 meter	50
	CA701-1M-S	Din 35 Rail slotted 1 meter	50
	CA701-15-1M	Din 35 Rail 15 deep unslotted 1 meter	50
	CA701-15-1M-S	Din 35 Rail 15 deep slotted 1 meter	50
	CA701-15-2M	Din 35 Rail 15 deep unslotted 2 meter	50
	CA701-15-2M-S	Din 35 Rail 15 deep slotted 2 meter	50
	CA103	EndClamp in Polyamide suitable for Din 35/DIN 35-15 rails	50
	CA702	End Clamp in Polyamide 66 suitable for Din 32 / Din 35 / Din 35-15 Rails	50
	CA802	End Clamp in Polyamide suitable for Din 35 / Din 35-15 Rails	50
	PPCX4/3	Partition Plate in Grey colour	50
	JX4/2	Shorting Link for 6 mm wide TB	100
	JX4/3	Shorting Link for 6 mm wide TB	50
	JX4/4	Shorting Link for 6 mm wide TB	50
	JX4/8	Shorting Link for 6 mm wide TB	10
	JX4/10	Shorting Link for 6 mm wide TB	10

CXF4L



**connectwell**  
THE RIGHT CONNECTION

**ACCESSORIES**

IMAGES	CAT. NO.	DESCRIPTION	STD. PACK
	CA509/K6	Blank Marking Tag	100
	SCS0.6/3.5	Electricians Screwdriver for slotted screws	10

**APPROVALS**



AEx eII Ex eII



**RATINGS AS PER STANDARDS**

STANDARDS	UL 1059	CSA C.22.2 No:158	IEC/EN60947-7-3
Approvals	UL	CSA	CE
Conductor Cross Section Stranded min.	24 AWG	24 AWG	0.2 mm <sup>2</sup>
Conductor Cross Section Stranded max.	10 AWG	10 AWG	4 mm <sup>2</sup>
Rated Voltage	600 V	600 V	1000 V
Rated Current	10 A	10 A	10 A

Website : [rujutaent.com](http://rujutaent.com)  
Email : [rujutaent@gmail.com](mailto:rujutaent@gmail.com)  
9082463426 , 8169580098  
9820825440 , 9769789105