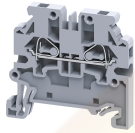


# CXS2.5



## 2.5 sq.mm Spring Clamp Feed Through Side Entry Terminal Blocks

The Spring Clamp is operated by using a screw driver to provide an access to the wire through an opening in the spring clamp. The inserted wire gets clamped on to the current bar when the screw driver is removed.

THIS PRODUCT IS NOT FOR SALE IN GERMANY

### TECHNICAL DATA

Rated Voltage	1000 V
Rated Current	24 A
Housing Material	Polymide
Product Function	Feed Through
Wire Entry Orientation	Side
Mounting Possibility	DIN 35/DIN 35-15 Rail
Operated by	Screw Driver
Rated Surge Voltage	8 KV
Pollution Degree	3

### CONNECTION DATA

Conductor Cross Section Stranded min.	0.2 mm <sup>2</sup>
Conductor Cross Section Stranded max.	2.5 mm <sup>2</sup>
Conductor Cross Section AWG/Kcmil min	24 AWG
Conductor Cross Section AWG/Kcmil max	12 AWG
Conductor Cross Section Stranded with Ferrule/Lug min	0.2 mm <sup>2</sup>
Conductor Cross Section Stranded with Ferrule/Lug max	2.5 mm <sup>2</sup>
2 Conductors with same Cross Section Stranded min	0.2 mm <sup>2</sup>
2 Conductor with same Cross Section Stranded max	1 mm <sup>2</sup>
Conductor Cross Section Solid min	0.2 mm <sup>2</sup>
Conductor Cross Section Solid max	4 mm <sup>2</sup>
2 Conductors with same Cross Section Stranded with TWIN Ferrule/Lug min	0.2 mm <sup>2</sup>
2 Conductor with same Cross Section Stranded with TWIN Ferrule/Lug max	1 mm <sup>2</sup>
Stripping Length	9 mm

### DIMENSIONS

Height with DIN 35 x 15 mm rail	50.8 mm
Height with DIN 35 x 7.5 mm rail	43.3 mm
Length	42.5 mm
Width (Thickness)	5 mm

### ORDERING INFORMATION

CAT. NO.	DESCRIPTION	STD. PACK
CXS2.5	2.5 sq.mm Feed Through Spring Clamp Side Entry Terminal Block in Grey colour	100

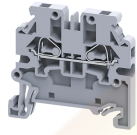
### ORDERING INFORMATION

CAT. NO.	DESCRIPTION	STD. PACK
CXS2.5BU	2.5 sq.mm Feed Through Spring Clamp Side Entry Terminal Block in Blue colour	100
CXS2.5BK	2.5 sq.mm Feed Through Spring Clamp Side Entry Terminal Block in Black colour	100
CXS2.5GN	2.5 sq.mm Feed Through Spring Clamp Side Entry Terminal Block in Green colour	100
CXS2.5R	2.5 sq.mm Feed Through Spring Clamp Side Entry Terminal Block in Red colour	100
CXS2.5Y	2.5 sq.mm Feed Through Spring Clamp Side Entry Terminal Block in Yellow colour	100

### ACCESSORIES

IMAGES	CAT. NO.	DESCRIPTION	STD. PACK
	CA701-1M	Din 35 Rail unslotted 1 meter	50
	CA701-2M	Din 35 Rail unslotted 2 meter	50
	CA701-2M-S	Din 35 Rail slotted 2 meter	50
	CA701-1M-S	Din 35 Rail slotted 1 meter	50
	CA701-15-1M	Din 35 Rail 15 deep unslotted 1 meter	50
	CA701-15-1M-S	Din 35 Rail 15 deep slotted 1 meter	50
	CA701-15-2M	Din 35 Rail 15 deep unslotted 2 meter	50
	CA701-15-2M-S	Din 35 Rail 15 deep slotted 2 meter	50
	CA202	End Clamp in Polyamide suitable for Din 35 / Din 35-15 Rails	25
	CA702	End Clamp in Polyamide 66 suitable for Din 32 / Din 35 / Din 35-15 Rails	50
	CA802	End Clamp in Polyamide suitable for Din 35 / Din 35-15 Rails	50
	EPCXS2.5	End Plate in Grey colour	50
	PPCX10	Partition Plate in Grey colour	50

CXS2.5



**connectwell**  
THE RIGHT CONNECTION

**ACCESSORIES**

IMAGES	CAT. NO.	DESCRIPTION	STD. PACK
	JX2.5/2	Shorting Link for 2.5 sq mm series	100
	JX2.5/3	Shorting Link for 2.5 sq mm series	50
	JX2.5/4	Shorting Link for 2.5 sq mm series	50
	JX2.5/5	Shorting Link for 2.5 sq mm series	50
	JX2.5/6	Shorting Link for 2.5 sq mm series	50
	JX2.5/7	Shorting Link for 2.5 sq mm series	10
	JX2.5/8	Shorting Link for 2.5 sq mm series	10
	JX2.5/10	Shorting Link for 2.5 sq mm series	10
	CA509/K5	Blank Marking Tag	100

**APPROVALS**



**NOTES**

THIS PRODUCT IS NOT FOR SALE IN GERMANY

**RATINGS AS PER STANDARDS**

STANDARDS	UL 1059	CSA C.22.2 No:158	IEC/EN60947-7-1
Approvals	UL	CSA	CE
Conductor Cross Section Stranded min.	24 AWG	24 AWG	0.2 mm <sup>2</sup>
Conductor Cross Section Stranded max.	12 AWG	12 AWG	2.5 mm <sup>2</sup>
Rated Voltage	600 V	600 V	1000 V
Rated Current	20 A	20 A	24 A

Website : [rujutaent.com](http://rujutaent.com)  
 Email : [rujutaent@gmail.com](mailto:rujutaent@gmail.com)  
 9082463426 , 8169580098  
 9820825440 , 9769789105