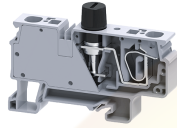


CXVF



**connectwell**  
THE RIGHT CONNECTION

**6 sq.mm Spring Clamp Vertical Fuse Terminal Blocks**

The Spring Clamp is operated by using a screw driver to provide an access to the wire through an opening in the spring clamp. The inserted wire gets clamped on to the current bar when the screw driver is removed.

**TECHNICAL DATA**

Rated Voltage	800 V
Rated Current	10 A
Housing Material	Polymide
Standard Colour	Grey
Product Function	Single Level Fuse
Wire Entry Orientation	Top
Mounting Possibility	DIN 35/DIN 35-15 Rail
Operated by	Screw Driver
Rated Surge Voltage	8 KV
Pollution Degree	3

**CONNECTION DATA**

Conductor Cross Section Stranded min.	0.2 mm <sup>2</sup>
Conductor Cross Section Stranded max.	6 mm <sup>2</sup>
Conductor Cross Section AWG/Kcmil min	24 AWG
Conductor Cross Section AWG/Kcmil max	8 AWG
Stripping Length	10 mm

**DIMENSIONS**

Height with DIN 35 x 15 mm rail	50.5 mm
Height with DIN 35 x 7.5 mm rail	43 mm
Length	75 mm
Width (Thickness)	12 mm

**FUSE SPECIFICATIONS**

Fuse Type	Glass type fuse
Fuse Size	5 X 20, 5 X 25, 6.3 X 32 mm
Fuse Current Rating	10 A

**ORDERING INFORMATION**

CAT. NO.	DESCRIPTION	STD. PACK
CXVFA	6 sq.mm Spring Clamp Vertical 5 x 20mm Fuse Terminal Blocks	50
CXVFB	6 sq.mm Spring Clamp Vertical 5 x 25mm Fuse Terminal Blocks	50
CXVFC	6 sq.mm Spring Clamp Vertical 6.3 x 32mm Fuse Terminal Blocks	50

**ACCESSORIES**

IMAGES	CAT. NO.	DESCRIPTION	STD. PACK
	CA701-1M	Din 35 Rail unslotted 1 meter	50
	CA701-2M	Din 35 Rail unslotted 2 meter	50
	CA701-2M-S	Din 35 Rail slotted 2 meter	50
	CA701-1M-S	Din 35 Rail slotted 1 meter	50
	CA701-15-1M	Din 35 Rail 15 deep unslotted 1 meter	50
	CA701-15-1M-S	Din 35 Rail 15 deep slotted 1 meter	50
	CA701-15-2M	Din 35 Rail 15 deep unslotted 2 meter	50
	CA701-15-2M-S	Din 35 Rail 15 deep slotted 2 meter	50
	CA103	EndClamp in Polyamide suitable for Din 35/Din 35-15 rails	50
	CA104	EndClamp in Polyamide suitable for Din 35/Din 35-15 rails	50
	CA702	End Clamp in Polyamide 66 suitable for Din 32 / Din 35 / Din 35-15 Rails	50
	JX4/2	Shorting Link for 6 mm wide TB	100
	JX4/3	Shorting Link for 6 mm wide TB	50
	JX4/4	Shorting Link for 6 mm wide TB	50
	JX4/8	Shorting Link for 6 mm wide TB	10
	JX4/10	Shorting Link for 6 mm wide TB	10
	CA509/K6	Blank Marking Tag	100
	SCS0.6/3.5	Electricians Screwdriver for slotted screws	10

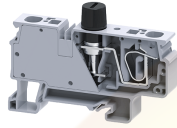
**APPROVALS**



**NOTES**

- 1) For shorting 2 no of CXVF we require 4 pole shorting link i.e., JX4/4
- 2) Polyamide V0 material as per UL 94

CXVF



**connectwell**  
THE RIGHT CONNECTION

**RATINGS AS PER STANDARDS**

<b>STANDARDS</b>	<b>UL 1059</b>	<b>CSA C.22.2 No:158</b>	<b>IEC/EN60947-7-1</b>
Approvals	UL	CSA	CE
Conductor Cross Section Stranded min.	24 AWG	24 AWG	0.2 mm <sup>2</sup>
Conductor Cross Section Stranded max.	8 AWG	8 AWG	10 mm <sup>2</sup>
Rated Voltage	600 V	600 V	1000 V
Rated Current	20 A	20 A	10 A

Website : [rujutaent.com](http://rujutaent.com)  
Email : [rujutaent@gmail.com](mailto:rujutaent@gmail.com)  
9082463426 , 8169580098  
9820825440 , 9769789105