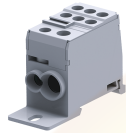


DB35



35 sq.mm Compact Distribution Blocks.

db35 distribution block are used for single phase distribution systems. These blocks can either be mounted on a Din Rail or can be Panel mounted.

TECHNICAL DATA

Rated Voltage	1000 V
Rated Current	125 A
Tightening Torque - Input Side	6 Nm
Tightening Torque - Output Side	3 Nm
Housing Material	Polymide
Product Function	Modular Distribution Blocks
Wire Entry Orientation	Side Entry
Mounting Possibility	DIN 35/DIN 35-15 Rail
Screw Size	M8
Operated by	Screwdriver
Rated Surge Voltage	6 KV
Pollution Degree	3

CONNECTION DATA

Conductor Cross Section Stranded min.- Input Side	6 mm ²
Conductor Cross Section Stranded max. - Input Side	35 mm ²
Conductor Cross Section Stranded min.- Output Side	6 mm ²
Conductor Cross Section Stranded min.- Output Side	2.5 mm ²
Conductor Cross Section Stranded max.- Output Side	16 mm ²
Conductor Cross Section Stranded max.- Output Side	10 mm ²
Conductor Cross Section Stranded min AWG/KCML.- Input Side	8 AWG
Conductor Cross Section Stranded max AWG/KCML.- Input Side	2 AWG
Stripping Length- Input Side	15 mm
Stripping Length-Output Side	10 mm
Internal Cylindrical Guage	A8

DIMENSIONS

Height with DIN 35 x 15 mm rail	57.8 mm
Height with DIN 35 x 7.5 mm rail	50.8 mm
Length	74.4 mm
Width (Thickness)	27 mm

ORDERING INFORMATION

CAT. NO.	DESCRIPTION	STD. PACK
DB35	35 sqmm Compact Distribution Terminal Block in Grey colour.	10
DB35BK	35 sqmm Compact Distribution Terminal Block in Black colour.	10

ORDERING INFORMATION

CAT. NO.	DESCRIPTION	STD. PACK
DB35BU	35 sqmm Compact Distribution Terminal Block in Blue colour.	10
DB35R	35 sqmm Compact Distribution Terminal Block in Red colour.	10
DB35Y	35 sqmm Compact Distribution Terminal Block in Yellow colour.	10

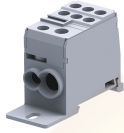
ACCESSORIES

IMAGES	CAT. NO.	DESCRIPTION	STD. PACK
	CA701-1M	Din 35 Rail unslotted 1 meter	50
	CA701-2M	Din 35 Rail unslotted 2 meter	50
	CA701-2M-S	Din 35 Rail slotted 2 meter	50
	CA701-1M-S	Din 35 Rail slotted 1 meter	50
	CA701-15-1M	Din 35 Rail 15 deep unslotted 1 meter	50
	CA701-15-1M-S	Din 35 Rail 15 deep slotted 1 meter	50
	CA701-15-2M	Din 35 Rail 15 deep unslotted 2 meter	50
	CA701-15-2M-S	Din 35 Rail 15 deep slotted 2 meter	50
	CA702	End Clamp in Polyamide 66 suitable for Din 32 / Din 35 / Din 35-15 Rails	50
	CA802	End Clamp in Polyamide suitable for Din 35 / Din 35-15 Rails	50
	CA509/K7.5	Blank Marking Tag	100
	SCPH2	Phillips Screwdriver for Phillips Recess screws	10

APPROVALS



DB35



connectwell
THE RIGHT CONNECTION

RATINGS AS PER STANDARDS

STANDARDS	UL 1059	IEC/EN60947-7-1	CSA C.22.2 No:158
Approvals	UL	CE	CSA
Conductor Cross Section Stranded min.- Input Side	8 AWG	6 mm ²	8 AWG
Conductor Cross Section Stranded max. - Input Side	2 AWG	35 mm ²	2 AWG
Conductor Cross Section Stranded min.- Output Side	14 AWG	2.5 mm ²	14 AWG
Conductor Cross Section Stranded max.- Output Side	6 AWG	10 mm ²	6 AWG
Rated Voltage	600 V	1000 V	600 V
Rated Current	115 A	125 A	115 A
Tightening Torque - Input Side	40 lb-in	6 Nm	40 lb-in
Tightening Torque - Output Side	17.5 lb-in	2 Nm	17.5 lb-in

Website : rujutaent.com
Email : rujutaent@gmail.com
9082463426 , 8169580098
9820825440 , 9769789105