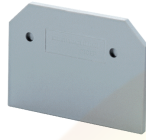


# EP2.5/4UN



## End Plate

End Plates are used to cover the live parts of the last Terminal Block

### PRODUCT SPECIFICATION

Height	32 mm
Length	39 mm
Width (Thickness)	1.5 mm

### ORDERING INFORMATION

CAT. NO.	DESCRIPTION	STD. PACK
EP2.5/4UN	End Plate in Grey Colour	50
EP2.5/4UNY	End Plate in Yellow Colour	50
EP2.5/4UNBU	End Plate in Blue Colour	50
EP2.5/4UNR	End Plate in Red Colour	50

### SUITABLE FOR

CTS4UNP	4 sq.mm Feed Through Philips Head screw Terminal Blocks
CTT2.5U	2.5 sq.mm Thermocouple Terminal Blocks.
CM4USC	4 sq.mm Spring Loaded Feed Through Terminal Blocks
CTS2.5UE	2.5 sq.mm, 6 mm thick Feed Through Terminal Block
CTS2.5UN	2.5 sq.mm, 5 mm thick Feed Through Terminal Block
CTS4UN	4 sq.mm Standard Feed Through Terminal Blocks

Website : [rujutaent.com](http://rujutaent.com)  
Email : [rujutaent@gmail.com](mailto:rujutaent@gmail.com)  
9082463426 , 8169580098  
9820825440 , 9769789105