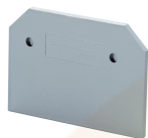


EPCBS3U



connectwell
THE RIGHT CONNECTION

End Plate

End Plates are used to cover the live parts of the last Terminal Block

PRODUCT SPECIFICATION

Height	26.2 mm
Length	49 mm
Width (Thickness)	1.5 mm

ORDERING INFORMATION

CAT. NO.	DESCRIPTION	STD. PACK
EPCBS3U	End Plate in Grey Colour	50

SUITABLE FOR

CBS3U	M3 sized Stud Type Terminal Blocks, suitable for operation with screwdriver.
CBS5U	M5 sized Stud Type Terminal Blocks, suitable for operation with screwdriver.
CBS4U	M4 sized Stud Type Terminal Blocks, suitable for operation with screwdriver.
CSB3/N3UL	M3 sized Stud Type Terminal Blocks, suitable for operation with screwdriver and nut driver.
CSB4/N4U	M4 sized Stud Type Terminal Blocks, suitable for operation with screwdriver and nut driver.
CSB3/N3U	M3 sized Stud Type Terminal Blocks, suitable for operation with screwdriver and nut driver.
CSB3/N3USH	M3 sized Stud Type Hinge Terminal Blocks, suitable for operation with screwdriver and nut driver.
CSB5/N5U	M5 sized Stud Type Terminal Blocks, suitable for operation with screwdriver and nut driver.
CSB5/N5USH	M5 sized Stud Type hinge Terminal Blocks, suitable for operation with screwdriver and nut driver.

Website : rujutaent.com
Email : rujutaent@gmail.com
9082463426 , 8169580098
9820825440 , 9769789105

1 of 1