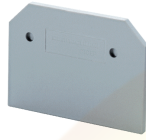


EPCDL4UN



connectwell
THE RIGHT CONNECTION

End Plate

End Plates are used to cover the live parts of the last Terminal Block

PRODUCT SPECIFICATION

Height	47.5 mm
Length	57 mm
Width (Thickness)	1.5 mm

ORDERING INFORMATION

CAT. NO.	DESCRIPTION	STD. PACK
EPCDL4UN	End Plate in Grey colour	50

SUITABLE FOR

CDLG4(I.S)	4 sq.mm Multiple Connection Earthing Terminal Blocks with 4 connection points.
CDL4UN	4 sq.mm Double Level Terminal Blocks.
CDL4UN(I.S)	4 sq.mm Double Level Internally Shorted Terminal Blocks.
CDLG4	4 sq.mm Double Level Earthing Terminal Blocks.

Website : rujutaent.com
Email : rujutaent@gmail.com
9082463426 , 8169580098
9820825440 , 9769789105

1 of 1