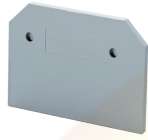


EPCMT4



connectwell
THE RIGHT CONNECTION

End Plate

End Plates are used to cover the live parts of the last Terminal Block

PRODUCT SPECIFICATION

Height	23 mm
Length	27 mm
Width (Thickness)	1.5 mm

ORDERING INFORMATION

CAT. NO.	DESCRIPTION	STD. PACK
EPCMT4	End Plate in Grey colour .	50

SUITABLE FOR

CMT4	4 sq.mm Micro Terminal Blocks.
------	--------------------------------

Website : rujutaent.com
Email : rujutaent@gmail.com
9082463426 , 8169580098
9820825440 , 9769789105