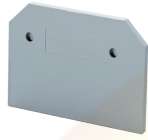


EPDDFL4U



connectwell
THE RIGHT CONNECTION

End Plate

End Plates are used to cover the live parts of the last Terminal Block

PRODUCT SPECIFICATION

Height	49 mm
Length	87.6 mm
Width (Thickness)	3 mm

ORDERING INFORMATION

CAT. NO.	DESCRIPTION	STD. PACK
EPDDFL4U	End Plate in Grey colour suitable for DDFL4U / DDFL4U(E) / DDFL4ULR / DDFL4U(E)LR Terminal Block	25

SUITABLE FOR

DDDL4U	4 sq.mm Disconnect & Test Terminal Blocks with disconnecting link.
DDDL4ULR	4 sq.mm Disconnect & Test Terminal Blocks with disconnecting link.
DDFL4U	4 sq.mm Double Level Fuse Terminal Blocks.
DDFL4ULR	4 sq.mm Double Level Fuse Terminal Blocks with two equi-potential points on each side.
DDFL4UE	4 sq.mm Double Level Fuse Terminal Blocks with offline LED indication.
DDFL4UELR	4 sq.mm Double Level Fuse Terminal Blocks with two equi-potential points on each side and offline LED indication.

Website : rujutaent.com
Email : rujutaent@gmail.com
9082463426 , 8169580098
9820825440 , 9769789105

1 of 1