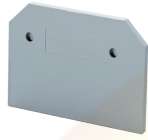


EPSTH4



connectwell
THE RIGHT CONNECTION

End Plate

End Plates are used to cover the live parts of the last Terminal Block

PRODUCT SPECIFICATION

Height	39.5 mm
Length	46 mm
Width (Thickness)	1.5 mm

ORDERING INFORMATION

CAT. NO.	DESCRIPTION	STD. PACK
EPSTH4	End Plate in Grey colour suitable for STH4 Terminal Block	50

SUITABLE FOR

STH4	6 sq. mm Stud Type Terminal Block - with captive nuts.
------	--

Website : rujutaent.com
Email : rujutaent@gmail.com
9082463426 , 8169580098
9820825440 , 9769789105