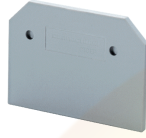


EPSTH4DT



connectwell
THE RIGHT CONNECTION

End Plate

End Plates are used to cover the live parts of the last Terminal Block

PRODUCT SPECIFICATION

Height	37.5 mm
Length	86 mm
Width (Thickness)	1.5 mm

ORDERING INFORMATION

CAT. NO.	DESCRIPTION	STD. PACK
EPSTH4DT	End Plate in Grey colour suitable for STH4DT / STH4DTSH Terminal Block	50

SUITABLE FOR

STH4DTTP	6 sq. mm M4 Stud Disconnect & Test Terminal Block - with captive nuts.
STH4DT	Stud Type Terminal Block
STH4DTFT	Stud Type Terminal Block
STH4DTSH	6 sq. mm M4 Stud Disconnect & Test shorted Terminal Block - with captive nuts.

Website : rujutaent.com
Email : rujutaent@gmail.com
9082463426 , 8169580098
9820825440 , 9769789105