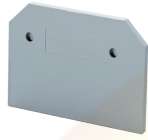


EPUSC



connectwell
THE RIGHT CONNECTION

End Plate

End Plates are used to cover the live parts of the last Terminal Block

PRODUCT SPECIFICATION	
Height	52 mm
Length	48.5 mm
Width (Thickness)	1.5 mm

ORDERING INFORMATION		
CAT. NO.	DESCRIPTION	STD. PACK
EPUSC	End Plate in Grey colour	50

SUITABLE FOR	
CTS6USC	6 sq.mm Spring Loaded Feed through Terminal Blocks
CHV10U	10 sq. mm High Voltage Terminal Blocks.
CHV4U	4 sq.mm High Voltage Terminal Blocks.
CTS4USC	4 sq.mm Spring Loaded Feed Through Terminal Blocks
CTS10USC	10 sq.mm Spring Loaded Terminal Blocks
CHV6U	6 sq.mm High Voltage Terminal Blocks.

Website : rujutaent.com
Email : rujutaent@gmail.com
9082463426 , 8169580098
9820825440 , 9769789105