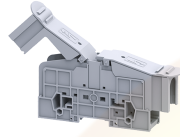


# PTB70/95SH



## Disconnect and Test Terminal Blocks

PTB series Terminal Blocks are preferred for application using wires of large cross section. The Wire is crimped to a ring / fork lug and is screwed on to the flat current bar of the Terminal Block. Specially designed Mounting Feet hold the Terminal Block rigidly on to the Mounting Rail. Two Lugs of the rated cross section can be connected to the Terminal Block, without sacrificing the safety of the Terminal Block. In PTB35SH, PTB70SH Terminal Blocks a hinged protective cover makes the Terminal Block shock proof (finger safe) and has marker recess to accept marking tag.

### TECHNICAL DATA

Rated Voltage	1000 V
Rated Current	232 A
Tightening Torque	10 Nm
Housing Material	Polymide
Product Function	Power Terminal Block
Wire Entry Orientation	Side Entry
Mounting Possibility	DIN 35/DIN 35-15 Rail
Stud Size	M8
Operated by	Nut Driver
Rated Surge Voltage	8 KV
Pollution Degree	3

### CONNECTION DATA

Conductor Cross Section Stranded min.	1.5 mm <sup>2</sup>
Conductor Cross Section Stranded max.	95 mm <sup>2</sup>
Conductor Cross Section AWG/Kcmil min	8 AWG
Conductor Cross Section AWG/Kcmil max	4/0 AWG
Conductor Cross Section Stranded with Ferrule/Lug min	1.5 mm <sup>2</sup>
Conductor Cross Section Stranded with Ferrule/Lug max	95 mm <sup>2</sup>
2 Conductors with same Cross Section Stranded min	1.5 mm <sup>2</sup>
2 Conductor with same Cross Section Stranded max	95 mm <sup>2</sup>

### DIMENSIONS

Height with DIN 35 x 15 mm rail	86 mm
Height with DIN 35 x 7.5 mm rail	78 mm
Length	192 mm
Width (Thickness)	32 mm

### ORDERING INFORMATION

CAT. NO.	DESCRIPTION	STD. PACK
PTB70/95SH	95 sq.mm Stud Type Power Terminal Block in Grey colour with Hinged Protective Cover	10
PTB70/95SHBK	95 sq.mm Stud Type Power Terminal Block in Black colour with Hinged Protective Cover	10
PTB70/95SHBU	95 sq.mm Stud Type Power Terminal Block in Blue colour with Hinged Protective Cover	10
PTB70/95SHGN	95 sq.mm Stud Type Power Terminal Block in Green colour with Hinged Protective Cover	10

### ORDERING INFORMATION

CAT. NO.	DESCRIPTION	STD. PACK
PTB70/95SHR	95 sq.mm Stud Type Power Terminal Block in Red colour with Hinged Protective Cover	10
PTB70/95SHY	95 sq.mm Stud Type Power Terminal Block in Yellow colour with Hinged Protective Cover	10

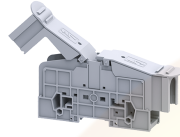
### ACCESSORIES

IMAGES	CAT. NO.	DESCRIPTION	STD. PACK
	CA701-1M	Din 35 Rail unslotted 1 meter	50
	CA701-2M	Din 35 Rail unslotted 2 meter	50
	CA701-2M-S	Din 35 Rail slotted 2 meter	50
	CA701-1M-S	Din 35 Rail slotted 1 meter	50
	CA701-15-1M	Din 35 Rail 15 deep unslotted 1 meter	50
	CA701-15-1M-S	Din 35 Rail 15 deep slotted 1 meter	50
	CA701-15-2M	Din 35 Rail 15 deep unslotted 2 meter	50
	CA701-15-2M-S	Din 35 Rail 15 deep slotted 2 meter	50
	CA102	End Clamp in Polyamide suitable for Din32 / Din35 / Din35-15 Rails	50
	CA202	End Clamp in Polyamide suitable for Din 35 / Din 35-15 Rails	25
	CA703/11	Permanent Shorting Links for 2 way shorting.	10
	CA704/11	Permanent Shorting Links for 3 way shorting.	10
	CA509/K9	Blank Marking Tag	100

### APPROVALS



PTB70/95SH



**connectwell**  
THE RIGHT CONNECTION

RATINGS AS PER STANDARDS

STANDARDS	UL 1059	IEC/EN60947-7-1	CSA C.22.2 No:158
Approvals	UL	CE	CSA
Conductor Cross Section Stranded min.	8 AWG	1.5 mm <sup>2</sup>	8 AWG
Conductor Cross Section Stranded max.	4/0 AWG	95 mm <sup>2</sup>	4/0 AWG
Rated Voltage	600 V	1000 V	600 V
Rated Current	230 A	232 A	230 A
Tightening Torque	87 lb-in	10 Nm	87 lb-in

Website : [rujutaent.com](http://rujutaent.com)  
Email : [rujutaent@gmail.com](mailto:rujutaent@gmail.com)  
9082463426 , 8169580098  
9820825440 , 9769789105