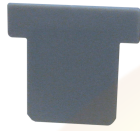


SP2.5/4UN



**connectwell**  
THE RIGHT CONNECTION

#### Separator Plate

Separator Plate are used for electrical separation of adjacent shorting links without the use of additional space. They can be inserted after the Terminal Blocks have been assembled on the din rail.

#### PRODUCT SPECIFICATION

Height	17.5 mm
Length	17.4 mm
Width (Thickness)	1.4 mm

#### ORDERING INFORMATION

CAT. NO.	DESCRIPTION	STD. PACK
SP2.5/4UN	Separator Plate in Grey colour	100

#### SUITABLE FOR

CTS2.5UN	2.5 sq.mm, 5 mm thick Feed Through Terminal Block
CHV6U	6 sq.mm High Voltage Terminal Blocks.
CTS4UN	4 sq.mm Standard Feed Through Terminal Blocks
CM4USC	4 sq.mm Spring Loaded Feed Through Terminal Blocks
CTS10USC	10 sq.mm Spring Loaded Terminal Blocks
CTS4UNP	4 sq.mm Feed Through Philips Head screw Terminal Blocks
CTS4USC	4 sq.mm Spring Loaded Feed Through Terminal Blocks
CHV10U	10 sq. mm High Voltage Terminal Blocks.
CHV4U	4 sq.mm High Voltage Terminal Blocks.
CTS2.5UE	2.5 sq.mm, 6 mm thick Feed Through Terminal Block
CTS6USC	6 sq.mm Spring Loaded Feed through Terminal Blocks

Website : [rujutaent.com](http://rujutaent.com)  
Email : [rujutaent@gmail.com](mailto:rujutaent@gmail.com)  
9082463426 , 8169580098  
9820825440 , 9769789105

1 of 1