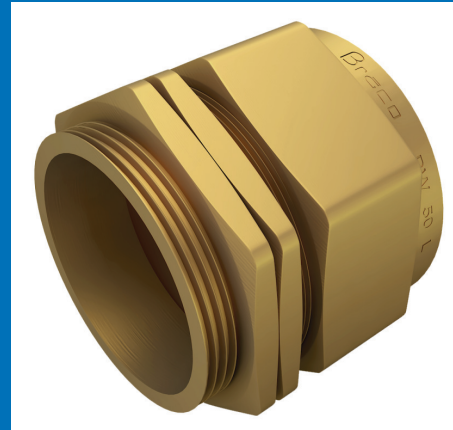


Braco BW Brass cable glands are as per BS 6121 Part 1:1989 and suitable for single wire armoured plastic or rubber sheathed cables. These glands provide mechanical cable retention, and electrical continuity via armour wire termination. The use of these glands is recommended in dry, indoor situations. Shrouds may be used for ingress protection.



### BW Type Cable Glands

GLAND SIZE	ENTRY THREAD		CABLE ACCEPTANCE DETAIL			ACROSS FLAT	ACROSS CORNER
	DIA. C	LENGTH MINIMUM E	DIA MAX. A	DIA MAX. B	ARMOUR DIAMETER D		
20 S	20	9	11.60	16.00	0.9/1.25	21.50	24.50
20 L	20	9	14.00	20.00	0.9/1.25	24.20	27.30
25 S	25	9	19.00	24.00	1.25/1.60	30.00	33.60
25 L	25	10	20.00	27.00	1.25/1.60	30.00	34.40
32 S	32	10	24.00	30.50	1.60/2.00	36.50	40.00
32 L	32	10	26.20	33.00	1.60/2.00	36.50	42.30
40 S	40	11	30.00	37.00	1.60/2.00	44.50	50.00
40 L	40	11	32.50	41.00	1.60/2.00	46.50	52.00
50 S	50	13	40.00	47.50	2.00/2.50	55.00	62.00
50 L	50	13	44.00	52.60	2.00/2.50	59.00	66.00
63 S	63	14	51.00	60.00	2.50	69.00	76.00
63 L	63	14	55.00	66.00	2.50	73.00	82.00
75 S	75	15	62.00	72.00	2.50	83.00	94.00
75 L	75	15	67.00	78.00	2.50	86.30	98.00
90 S	90	20	74.00	84.00	2.50/3.15	94.00	104.00
90 L	90	20	79.00	90.00	2.50/3.15	105.00	118.00

