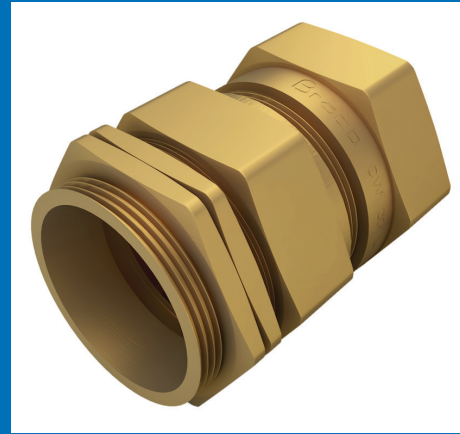


Braco CW Brass cable glands are as per BS 6121 Part 1 :1989 and suitable for single wire armoured plastic or rubber sheathed cables. The outer seal grips sheath. These glands provide mechanical cable retention, and electrical continuity via armour wire termination. The use of these glands is recommended in indoor as well as outdoor application because of suitability in most climatic conditions weather proof and water proof.



### CW Type Cable Glands

GLAND SIZE	ENTRY THREAD		CABLE ACCEPTANCE DETAIL			ACROSS FLAT	ACROSS CORNER
	DIA. C	LENGTH MINIMUM E	DIA. MAX. A	DIA. MAX. B	ARMOUR DIAMETER D		
20 S	20	10	11.60	16.00	0.9/1.25	22.00	25.00
20 L	20	10	14.00	20.00	0.9/1.25	25.40	28.50
25 S	25	10	19.00	24.00	1.25/1.60	30.00	33.60
25 L	25	10	20.00	27.00	1.25/1.60	33.00	37.00
32 S	32	10	24.00	30.50	1.60/2.00	38.00	43.00
32 L	32	10	26.20	33.00	1.60/2.00	40.00	45.00
40 S	40	11	30.00	37.00	1.60/2.00	44.50	50.00
40 L	40	11	32.50	41.00	1.60/2.00	46.50	52.00
50 S	50	13	40.00	47.50	2.00/2.50	55.00	62.00
50 L	50	13	44.00	52.60	2.00/2.50	59.00	66.00
63 S	63	14	51.00	60.00	2.50	69.00	76.00
63 L	63	14	55.00	66.00	2.50	73.00	82.00
75 S	75	15	62.00	72.00	2.50	83.00	94.00
75 L	75	15	67.00	78.00	2.50	87.60	99.00
90S	90	20	74.00	84.00	2.50/3.15	94.00	104.00
90 L	90	20	79.00	90.00	2.50/3.15	105.00	118.00

