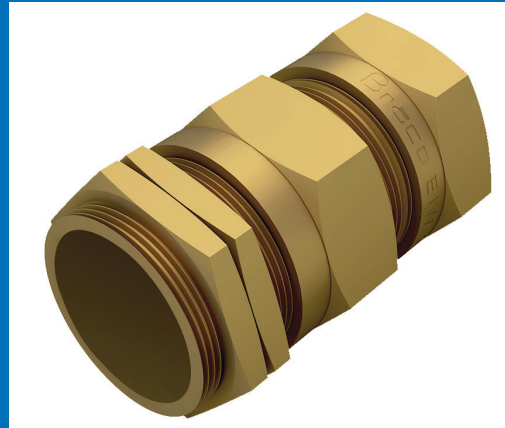


Braco E1W type brass glands are as per BS 612 part I:1989 suitable for indoor as well as outdoor applications. These glands are suitable for all types of SWA cable, providing environmental seal on both the cable inner and electrical continuity via armour wire termination.



### BRACO E1W TYPE GLANDS

GLAND SIZE	ENTRY THREAD		CABLE ACCEPTANCE DETAIL			ACROSS FLAT	ACROSS CORNER
	DIA. C	LENGTH MINIMUM E	DIA MAX. A	DIA MAX. B	ARMOUR DIAMETER D		
20 S	20	10	8.00 - 11.80	12.90 - 17.20	0.90/1.25	24.00	27.00
20 L	20	10	11.00 - 14.00	15.50 - 20.80	0.90/1.25	27.70	31.00
25 S	25	10	12.00 - 17.00	17.50 - 24.00	1.25/1.60	31.50	35.00
25 L	25	10	13.00 - 20.30	24.00 - 27.20	1.25/1.60	35.00	39.00
32 S	32	10	17.00 - 24.00	25.00 - 31.00	1.60/2.00	43.00	47.50
32 L	32	10	19.00 - 26.20	26.70 - 34.00	1.60/2.00	43.00	47.50
40 S	40	15	23.00 - 30.00	31.00 - 38.50	1.60/2.00	51.50	57.00
40 L	40	15	25.00 - 32.20	33.00 - 40.50	1.60/2.00	51.50	57.00
50 S	50	15	31.50 - 38.20	39.40 - 46.80	2.00/2.50	58.50	65.00
50 L	50	15	36.50 - 44.00	45.70 - 53.20	2.00/2.50	66.00	73.00
63 S	63	15	42.50 - 50.00	52.10 - 59.00	2.50	72.00	80.00
63 L	63	15	49.10 - 56.00	58.40 - 66.00	2.50	80.00	89.00
75 S	75	17	54.50 - 62.00	64.80 - 72.00	2.50	86.50	97.00
75 L	75	17	60.50 - 68.00	71.10 - 78.00	2.50	94.00	105.00
90 L	90	20	66.00 - 79.00	77.00 - 90.00	2.50/3.15	106.00	118.00

