

TRIBOX®

THERMOPLASTIC ENCLOSURES

ENCLOSURE PROGRAM



- BASIC SERIES
- HEAVY SERIES



Trinity Touch Tribox Enclosure

RUJUTA CORPORATION
 Authorised Distributor
 Address: G-14B, Devkaran Mansion, Ground Floor,
 Pathakwadi, Princess St., Mumbai-400002
 Mob: 9769789105/8169580098/9820825440/9082463426
 Email: rujutaent@gmail.com

SIMPLY SOLUTIONS

CONTENTS

Organisation Info	3
TRIBOX[®] Enclosure	4
• Reference	4
• Benefits	4
• Areas of Application	4
Summary of TRIBOX[®] Series	5
Technical Information	5
Enclosure IP and IK classification table	6
Enclosure Basic Series	7
Enclosure Heavy Series	8
Article numbers & sizes	9
TRIBOX[®] Enclosure Accessories	10-14
• Mounting Plate	10
• Cover Screw	11
• SS Mounting Foot	11
• G.I Mounting Channel	12
• Hinge	12
• Latch	12
• Handle	13
• Window	13
• Venting Element	13
• Combiner	14
Combination Units	14



Organisation

Trinity Touch is a leading product manufacturer and solutions provider for Industrial Electrical applications. We supply our high quality products and solutions to various industries such as panel builders, machine builders, renewable energy & telecom to name a few.

Trinity Touch has two Business Areas, Cabinet Plus (for electrical & electronics components) and Solutions (Solar Solutions, Wind Solutions, Telecom Solutions etc.) that have become technology or market leading in their respective areas of application.

We have a national and global presence to service the needs and requirements of our customers and are exporting our products to over 20 countries.

Solutions

Trinity Touch provides market leading electrical solutions for various application. We have technology and market leading solutions for industries such as Solar, Wind, Railways & Telecom. In the Solar Industry, we have supplied over 17.5 GWp worth of solutions worldwide.

Products

Trinity Touch focuses on manufacturing various items used in control cabinet industry. Trinity Touch is one of the leading manufacturers of industrial grade Enclosures, Cable Glands, Wiring Ducts and DIN rails, Interface Modules, Timers to name just a few in the control cabinet industry. We have many prestigious clients for these products including leading System Integrators, Panel Builders, Machine Builders and Industrial Corporations globally.

Approvals

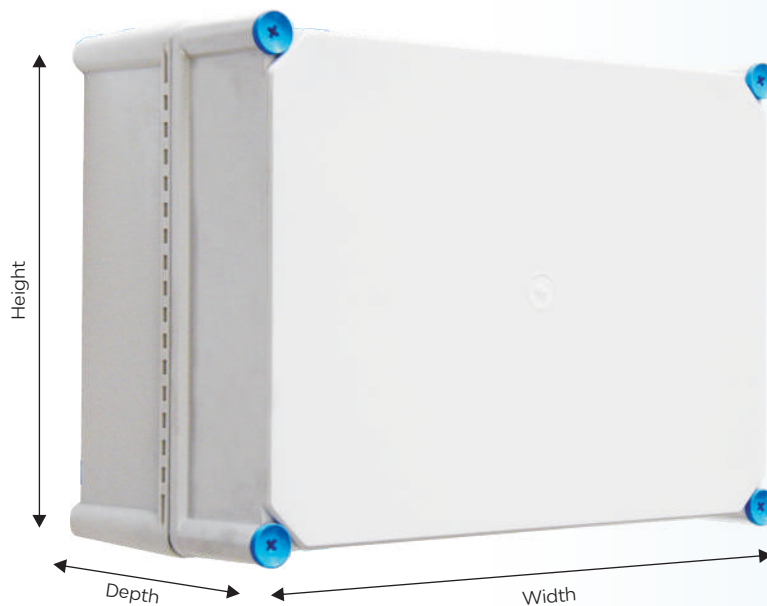


Thermoplastic Enclosures

TRIBOX®



Our Basic and Heavy Series caters to a market which requires compact and robust enclosures. We use a high quality ABS and Polycarbonate material and provide Ingress Protection IP 67 along with protection against mechanical impacts IK 08 for ABS and IK 10 for Polycarbonate. A High quality gasket, well engineered screws and tested box design make our Basic & Heavy series a good solution for all the demand placed on compact enclosures.



Benefits

- Easy machining with normal tools.
- Easy colouring through pigmentation.
- Low weight.
- Good resistance to chemical attack.
- Excellent insulating properties.
- High IP degree of protection (Dust and jet water proof)
- High impact resistance.
- Temperature resistance.
- Corrosion proof.
- UV radiation proof.
- Self- extinguishing flammability.
- Suitable for harsh and demanding environments.
- All sizes are available in transparent and grey cover.

Areas of Application

- Industries and Infrastructure areas.
- Marine and Shipyard environments.
- Power plants and utilities.
- Photovoltaic plants.
- Power Stations, Gas Stations and Pipelines.
- Automotive Industries.
- Cement Factories.
- Cold storage facilities.
- Chemical and Pharma Industries.
- Hotels, Hospitals and Commercial Complexes.
- School, Universities, Stadium Complexes.
- Railways and Metros.
- Residential and Non- residential Buildings.
- Parking & landscaping areas.
- Telecommunications and Digital Industries.
- Tunnel & road constructions.
- Water and Waste treatment plants.
- Manufacturing & OEM Industries & many more.

Summary of **TRIBOX®** Series

SN	Type	Dimension (WxHxD) mm	Material
1	Basic 0808	85 x 83 x 60 mm	ABS / Polycarbonate
2	Basic 1010	102 x 100 x 60 mm	ABS / Polycarbonate
3	Basic 1308	130 x 80 x 60 mm	ABS / Polycarbonate
4	Basic 1313	130 x 130 x 75 mm	ABS / Polycarbonate
5	Basic 1808	180 x 80 x 85 mm	ABS / Polycarbonate
6	Basic 1813	180 x 130 x 100 mm	ABS / Polycarbonate
7	Basic 1818	180 x 180 x 100 mm	ABS / Polycarbonate
8	Basic 2708	270 x 80 x 85 mm	ABS / Polycarbonate
9	Heavy 2819 13	280 x 190 x 130 mm	ABS / Polycarbonate
10	Heavy 2819 17	280 x 190 x 170 mm	ABS / Polycarbonate
11	Heavy 2828 13	280 x 280 x 130 mm	ABS / Polycarbonate
12	Heavy 2828 17	280 x 280 x 175 mm	ABS / Polycarbonate
13	Heavy 3819 13	380 x 190 x 130 mm	ABS / Polycarbonate
14	Heavy 3828 13	380 x 280 x 130 mm	ABS / Polycarbonate
15	Heavy 3828 17	380 x 280 x 175 mm	ABS / Polycarbonate
16	Heavy 4538 21	450 x 380 x 215 mm	ABS / Polycarbonate
17	Heavy 5638 18	560 x 380 x 180 mm	ABS / Polycarbonate
18	Heavy 6060 22	600 x 600 x 225 mm	ABS / Polycarbonate

Technical Information

SN	Property	ABS	Polycarbonate
1	Ingress protection (EN 60529)	IP 67	IP 67
2	Impact resistance (EN 62262)	IK 08	IK 10
3	Temperature range - continuous	-20 to +60°C	-40 to +80°C
4	Electrical insulation	Insulated	Insulated
5	Enclosure flammability rating	UL 94-HB	UL 94-V0
6	Glow wire test	650°C	960°C
7	Non-toxicity	Halogen free	Halogen free
8	UV Stabilised	YES	YES
9	Outdoor Suitability (UL746C) f1	-	YES
Conformity to standards			
10	Empty enclosure for low voltage switchgear	IEC 62208	IEC 62208
11	RoHS	YES	YES
12	CE	YES	YES

All certificates and reports are available on request

Data subject to change without prior notice

Thermoplastic Enclosures

TRIBOX®

IP and IK classification table



FIRST DIGIT

Protection Against Solid Object / Dust

IP	Test
0	no protection
1	Protected against solid objects over 50 mm (Hands)
2	Protected against solid objects over 12 mm (Fingers)
3	Protected against solid objects over 2.5 mm (Tools + small wires)
4	Protected against solid objects over 1 mm (Tools + small wires)
5	Protected against dust - limited ingress permitted (no harmful deposit)
6	totally protected against dust



SECOND DIGIT

Protection Against Liquids

IP	Test
0	no protection
1	Protected against vertically falling drops of water
2	Protected against direct sprays of water up to 15° from the vertical
3	Protected against sprays to 60° from the vertical
4	Protected against water sprayed from all directions - limited ingress permitted
5	Protected against low pressure jets of water from all directions - limited ingress permitted
6	Protected against low pressure jets of water from all directions - limited ingress permitted
7	Protected against effects of immersion between 15 cm and 1 m
8	Protected against long periods of immersion under pressure



Protection Against External Mechanical Impacts

IP	Test
0	no protection
1-5	impact < 1 joule
6	500 g, 40 cm impact 1 joule
7	500 g, 40 cm impact 2 joule
8	1.7 kg, 30 cm impact 5 joule
9	5 kg, 20 cm impact 10 joule
10	5 kg, 40 cm impact 20 joule

TRIBOX® Basic Series



BASIC 0808 06G



BASIC 0808 06G (With K.O.)



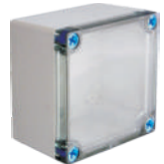
BASIC 1010 06G



BASIC 0808 06T



BASIC 0808 06T (With K.O.)



BASIC 1010 06T



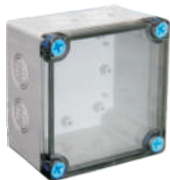
BASIC 1010 06G (With K.O.)



BASIC 1308 G



BASIC 1313 G



BASIC 1010 06T (With K.O.)



BASIC 1308 T



BASIC 1313 T



BASIC 1813 G



BASIC 1818 G



BASIC 1808 09G



BASIC 1813 T



BASIC 1818 T



BASIC 2708 09G

TRIBOX® Heavy Series



HEAVY 2819 13G



HEAVY 2819 17G



HEAVY 2828 13G



HEAVY 2819 13T



HEAVY 2819 17T



HEAVY 2828 13T



HEAVY 2828 17G



HEAVY 3828 13G



HEAVY 3828 17G



HEAVY 2828 17T



HEAVY 3828 13T



HEAVY 3828 17T



HEAVY 3819 13G



HEAVY 5638 18G



HEAVY 6060 22G



HEAVY 4538 21T



HEAVY 5638 18T



HEAVY 6060 22T

TRIBOX®

Basic Series

SN	Type	Article No.	Size (WxHxD) mm
1	BA-ABS 0808 06G	01 17 03577	85 x 83 x 60
2	BA-PC 0808 06G	01 17 03578	85 x 83 x 60
3	BA-ABS 0808 06T	01 17 03579	85 x 83 x 60
4	BA-PC 0808 06T	01 17 03580	85 x 83 x 60
5	BA-ABS 0808 06G (With K.O.)	01 17 03581	85 x 83 x 60
6	BA-PC 0808 06G (With K.O.)	01 17 03582	85 x 83 x 60
7	BA-ABS 0808 06T (With K.O.)	01 17 03583	85 x 83 x 60
8	BA-PC 0808 06T (With K.O.)	01 17 03584	85 x 83 x 60
9	BA-ABS 1010 06G	01 17 03585	102 x 100 x 60
10	BA-PC 1010 06G	01 17 03586	102 x 100 x 60
11	BA-ABS 1010 06T	01 17 03587	102 x 100 x 60
12	BA-PC 1010 06T	01 17 03588	102 x 100 x 60
13	BA-ABS 1010 06G (With K.O.)	01 17 03589	102 x 100 x 60
14	BA-PC 1010 06G (With K.O.)	01 17 03590	102 x 100 x 60
15	BA-ABS 1010 06T (With K.O.)	01 17 03591	102 x 100 x 60
16	BA-PC 1010 06T (With K.O.)	01 17 03592	102 x 100 x 60
17	BA-ABS 1308G	01 17 00571	130 x 80 x 60
18	BA-PC 1308G	01 17 00594	130 x 80 x 60
19	BA-ABS 1308T	01 17 00586	130 x 80 x 60
20	BA-PC 1308T	01 17 00602	130 x 80 x 60
21	BA-ABS 1313G	01 17 00568	130 x 130 x 75
22	BA-PC 1313G	01 17 00591	130 x 130 x 75
23	BA-ABS 1313T	01 17 00583	130 x 130 x 75
24	BA-PC 1313T	01 17 00599	130 x 130 x 75
25	BA-ABS 1808 09G	01 17 03593	180 x 80 x 85
26	BA-PC 1808 09G	01 17 03594	180 x 80 x 85
27	BA-ABS 1808 09T	01 17 03595	180 x 80 x 85
28	BA-PC 1808 09T	01 17 03596	180 x 80 x 85
29	BA-ABS 1813G	01 17 00570	180 x 130 x 100
30	BA-PC 1813G	01 17 00593	180 x 130 x 100
31	BA-ABS 1813T	01 17 00585	180 x 130 x 100
32	BA-PC 1813T	01 17 00601	180 x 130 x 100
33	BA-ABS 1818G	01 17 00572	180 x 180 x 100
34	BA-PC 1818G	01 17 00595	180 x 180 x 100
35	BA-ABS 1818T	01 17 00587	180 x 180 x 100
36	BA-PC 1818T	01 17 00603	180 x 180 x 100
37	BA-ABS 2708 09G	01 17 03597	270 x 80 x 85
38	BA-PC 2708 09G	01 17 03598	270 x 80 x 85
39	BA-ABS 2708 09T	01 17 03599	270 x 80 x 85
40	BA-PC 2708 09T	01 17 03600	270 x 80 x 85

Heavy Series

Type	Article No.	Size (WxHxD) mm
HE-ABS 2819 13G	01 17 00569	280 x 190 x 130
HE-PC 2819 13G	01 17 00592	280 x 190 x 130
HE-ABS 2819 13T	01 17 00584	280 x 190 x 130
HE-PC 2819 13T	01 17 00600	280 x 190 x 130
HE-ABS 2819 17G	01 17 02287	280 x 190 x 170
HE-PC 2819 17G	01 17 02288	280 x 190 x 170
HE-ABS 2819 17T	01 17 02289	280 x 190 x 170
HE-PC 2819 17T	01 17 02290	280 x 190 x 170
HE-ABS 2828 13G	01 17 00580	280 x 280 x 130
HE-PC 2828 13G	01 17 00596	280 x 280 x 130
HE-ABS 2828 13T	01 17 00588	280 x 280 x 130
HE-PC 2828 13T	01 17 00604	280 x 280 x 130
HE-ABS 2828 17G	01 17 02291	280 x 280 x 175
HE-PC 2828 17G	01 17 02292	280 x 280 x 175
HE-ABS 2828 17T	01 17 02293	280 x 280 x 175
HE-PC 2828 17T	01 17 02294	280 x 280 x 175
HE-ABS 3819 13G	01 17 02738	380 x 190 x 130
HE-PC 3819 13G	01 17 02740	380 x 190 x 130
HE-ABS 3819 13T	01 17 02739	380 x 190 x 130
HE-PC 3819 13T	01 17 02741	380 x 190 x 130
HE-ABS 3828 13G	01 17 01190	380 x 280 x 130
HE-PC 3828 13G	01 17 01191	380 x 280 x 130
HE-ABS 3828 13T	01 17 01192	380 x 280 x 130
HE-PC 3828 13T	01 17 01193	380 x 280 x 130
HE-ABS 3828 17G	01 17 00581	380 x 280 x 175
HE-PC 3828 17G	01 17 00597	380 x 280 x 175
HE-ABS 3828 17T	01 17 00589	380 x 280 x 175
HE-PC 3828 17T	01 17 00605	380 x 280 x 175
HE-ABS 4538 21G	01 17 07838	450 x 380 x 215
HE-PC 4538 21G	01 17 07836	450 x 380 x 215
HE-ABS 4538 21T	01 17 07837	450 x 380 x 215
HE-PC 4538 21T	01 17 07835	450 x 380 x 215
HE-ABS 5638 18G	01 17 00582	560 x 380 x 180
HE-PC 5638 18G	01 17 00598	560 x 380 x 180
HE-ABS 5638 18T	01 17 00590	560 x 380 x 180
HE-PC 5638 18T	01 17 00606	560 x 380 x 180
HE-ABS 6060 22G	01 17 07834	600 x 600 x 225
HE-PC 6060 22G	01 17 07832	600 x 600 x 225
HE-ABS 6060 22T	01 17 07833	600 x 600 x 225
HE-PC 6060 22T	01 17 07831	600 x 600 x 225

Polycarbonate and ABS range has been designed to house and protect electrical and electronic components in hostile environments. Cover available are opaque or transparent "smoke grey". A selective range of accessories is also available including a hinged door lock, mounting plate & mounting clamps. Dimensions of enclosures range from 85x83x60 mm to 600x600x225 mm.

TRIBOX® Enclosure Accessories

Mounting Plate



Bakelite Sheet Mounting Plate

MATERIAL: Bakelite Sheet



FRP Mounting Plate

MATERIAL: Fiberglass Reinforced Polyester



Galvanised Iron (GI) Mounting Plate

MATERIAL: Galvanised Iron (GI)

Article No.	Enclosure Type
039910364	BA PC/ABS 1813 G/T
039912120	BA PC/ABS 1818 G/T
039914315	BA PC/ABS 2708 09G/T
039902334	HE-PC/ABS 2819 13G/T
039902334	HE-PC/ABS 2819 17G/T
039903096	HE-PC/ABS 2828 13G/T
039903096	HE-PC/ABS 2828 17G/T
039908489	HE-PC/ABS 3819 13G/T
039903097	HE-PC/ABS 3828 13G/T
039903097	HE-PC/ABS 3828 17G/T
039903213	HE-PC/ABS 5638 18G/T
039914561	HE-PC/ABS 6060 225G/T

Article No.	Enclosure Type
039914570	HE-PC/ABS 2819 13G/T
039914570	HE-PC/ABS 2819 17G/T
039914571	HE-PC/ABS 2828 13G/T
039914571	HE-PC/ABS 2828 17G/T
039914572	HE-PC/ABS 3819 13G/T
039914573	HE-PC/ABS 3828 13G/T
039914573	HE-PC/ABS 3828 17G/T
039914574	HE-PC/ABS 5638 18G/T
039914562	HE-PC/ABS 6060 225G/T

Article No.	Enclosure Type
011703601	BA ABS/PC 0808 06G/T
011703601	BA ABS/PC 0808 06G/T(WITH K.O.)
011703602	BA ABS/PC 1010 06G/T
011703602	BA ABS/PC 1010 06G/T(WITH K.O.)
011700608	BA PC/ABS 1308G/T
011700610	BA PC/ABS 1313 G/T
011703603	BA PC/ABS 1808 G/T
011700612	BA PC/ABS 1813 G/T
011700614	BA PC/ABS 1818 G/T
011703604	BA PC/ABS 2708 09G/T
011700616	HE-PC/ABS 2819 13G/T
011700616	HE-PC/ABS 2819 17G/T
011700618	HE-PC/ABS 2828 13G/T
011700618	HE-PC/ABS 2828 17G/T
011703605	HE-PC/ABS 3819 13G/T
011700620	HE-PC/ABS 3828 13G/T
011700620	HE-PC/ABS 3828 17G/T
011700622	HE-PC/ABS 5638 18G/T
039914563	HE-PC/ABS 6060 225G/T

Cover Screw



MATERIAL: Polyamide

Article No.	Enclosure Type
011700910	BA ABS/PC 0808 06G/T
011700910	BA ABS/PC 0808 06G/T(WITH K.O.)
011700910	BA ABS/PC 1010 06G/T
011700910	BA ABS/PC 1010 06G/T(WITH K.O.)
011700910	BA PC/ABS 1308G/T
011700911	BA PC/ABS 1313 G/T
011700911	BA PC/ABS 1808 G/T
011700911	BA PC/ABS 1813 G/T
011700911	BA PC/ABS 1818 G/T
011700911	BA PC/ABS 2708 09G/T
011700909	HE-PC/ABS 2819 13G/T
011700909	HE-PC/ABS 2819 17G/T
011700909	HE-PC/ABS 2828 13G/T
011700909	HE-PC/ABS 2828 17G/T
011700909	HE-PC/ABS 3819 13G/T
011700909	HE-PC/ABS 3828 13G/T
011700909	HE-PC/ABS 3828 17G/T
011700909	HE-PC/ABS 5638 18G/T
039913031	HE-PC/ABS 6060 225G/T

SS Mounting Foot



MATERIAL: Galvanised Iron (GI)

Article No.	Enclosure Type
039914565	BA ABS/PC 0808 06G/T
039914565	BA ABS/PC 0808 06G/T(WITH K.O.)
039914565	BA ABS/PC 1010 06G/T
039914565	BA ABS/PC 1010 06G/T(WITH K.O.)
039914565	BA PC/ABS 1308G/T
039914565	BA PC/ABS 1313 G/T
039914565	BA PC/ABS 1808 G/T
039914565	BA PC/ABS 1813 G/T
039914565	BA PC/ABS 1818 G/T
039914565	BA PC/ABS 2708 09G/T
039914560	HE-PC/ABS 2819 13G/T
039914560	HE-PC/ABS 2819 17G/T
039914560	HE-PC/ABS 2828 13G/T
039914560	HE-PC/ABS 2828 17G/T
039914560	HE-PC/ABS 3819 13G/T
039914560	HE-PC/ABS 3828 13G/T
039914560	HE-PC/ABS 3828 17G/T
039914560	HE-PC/ABS 5638 18G/T

G.I Mounting Channel



MATERIAL: Galvanised Iron (GI)

Article No.	Enclosure Type
039914564	HE-PC/ABS 6060 225G/T

Hinge



MATERIAL: PA/AL

Article No.	Enclosure Type
011700625	HE-PC/ABS 2819 13G/T
011700625	HE-PC/ABS 2819 17G/T
039912325	HE-PC/ABS 2828 13G/T
039912325	HE-PC/ABS 2828 17G/T
011700625	HE-PC/ABS 3819 13G/T
039912325	HE-PC/ABS 3828 13G/T
039912325	HE-PC/ABS 3828 17G/T
039912325	HE-PC/ABS 5638 18G/T
039913221	HE-PC/ABS 6060 225G/T

Latch



MATERIAL: Stainless Steel (SS)

Article No.	Enclosure Type
039914579	HE-PC/ABS 2819 13G/T
039914579	HE-PC/ABS 2819 17G/T
039914579	HE-PC/ABS 2828 13G/T
039914579	HE-PC/ABS 2828 17G/T
039914579	HE-PC/ABS 3819 13G/T
039914579	HE-PC/ABS 3828 13G/T
039914579	HE-PC/ABS 3828 17G/T
039914579	HE-PC/ABS 5638 18G/T
039914579	HE-PC/ABS 6060 225G/T

Handle



Article No.	Enclosure Type
39914663	HE-PC/ABS 2819 13G/T
39914663	HE-PC/ABS 2819 17G/T
39914663	HE-PC/ABS 2828 13G/T
39914663	HE-PC/ABS 2828 17G/T
39914663	HE-PC/ABS 3819 13G/T
39914663	HE-PC/ABS 3828 13G/T
39914663	HE-PC/ABS 3828 17G/T
39914663	HE-PC/ABS 5638 18G/T
39914663	HE-PC/ABS 6060 225G/T

Window



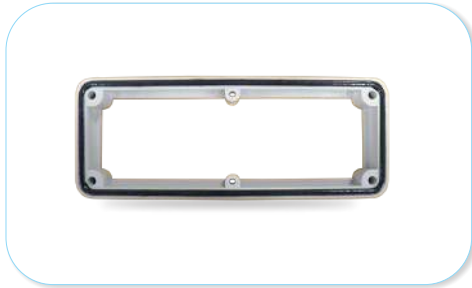
Article No.	Type
039907468	2 Way Window
039907469	4 Way Window
039907470	8 Way Window
039907471	12 Way window

Venting Element



Material	P.A6
IP Rating	54

Combiner



MATERIAL: Polycarbonate

Article No.	Enclosure Type
039909623	HE-PC/ABS 2828 13G/T
039909623	HE-PC/ABS 2828 17G/T
039909623	HE-PC/ABS 3828 13G/T
039909623	HE-PC/ABS 3828 17G/T
039909623	HE-PC/ABS 5638 18G/T
039913722	HE-PC/ABS 6060 225G/T

Combination Units

Special Features

A bigger range and size can be achieved by using specially engineered combination system made by combining **TRIBOX** enclosures. It comprises of special set of heavy series **TRIBOX** enclosures. The modular system is designed to achieve IP 65 protection which makes the system fit for outdoor use. Our modular system of enclosures is fit for use in low voltage switchgear.



OTHER PRODUCT PROGRAMS

Wiring Ducts
Wire Management Solutions
PVC & Halogen Free

REACH CERTIFIED RoHS CE

Cable Glands
With Wide Clamping Range

IP68 RoHS CE

DIN Rails

CE RoHS

Flexible Conduits

CE eUL RoHS

Solderless Terminals

RoHS

Interface Modules

CE RoHS

Analog Timers & Digital Timers

CE RoHS

TRISOLAR

TRIBOX
Customised Solutions

IP 65/67 IK 07/08

Trinity Touch Pvt. Ltd.

www.trinitytouch.com

INDIA
Delhi: Corporate Office
D-10, Defence Colony, New Delhi
110024, INDIA
Tel: +91.11.71200900
Fax: +91.11.71200998
E-mail: postmaster@trinitytouch.com

Bengaluru
2nd Floor, Umiya Land Mark 10/7,
Lavelle Road, Bengaluru 560001, INDIA
Tel: +91.80.46231200

Works & Warehouse
Prithla-Dudhola road, Dudhola Distt. Palwal,
Haryana 121102, INDIA
Tel: +91.1275.711500
E-mail: sales@trinitytouch.com



Trinity Touch (EUROPE) Ltd.

www.trinitytouch.co.uk

UK
Unit-L, Tyson Courtyard, Weldon South
Industrial Estate, Corby, Northants,
N N18 8AZ, UK
Tel: +44 (0) 1536 400 641
Fax: +44 (0) 1536 268 043
E-mail: gbsales@trinitytouch.com

Distributed by :